



4 Bed Villa (Detached) For Sale

€1,750,000

Guadalmina Alta, Costa del Sol

Ref: R4220680

Contemporary built villa located in a prime position beside Guadalmina Golf Course. Built over two levels, the property offers privacy, amenities and spacious family living. The villa has just been refurbished and given an open modern interior with a seamless indoor-outdoor living flow. Interiors and bespoke custom-designed furniture were meticulously designed by our in-house Interior Designers. The villa boasts 4 large and bright double bedrooms each with quality ensuite bathrooms and recently installed fitted wardrobes, an indoor-outdoor living large terrace, private swimming pool and perfectly manicured gardens. Features: - Luxury villa - Great location - Private pool and garden

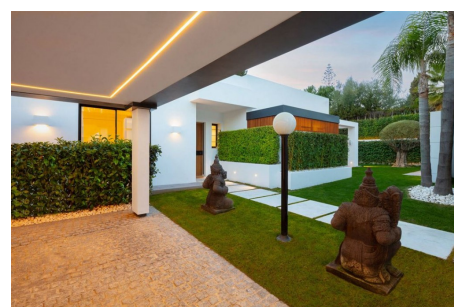
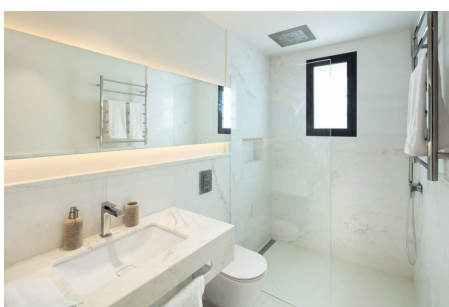
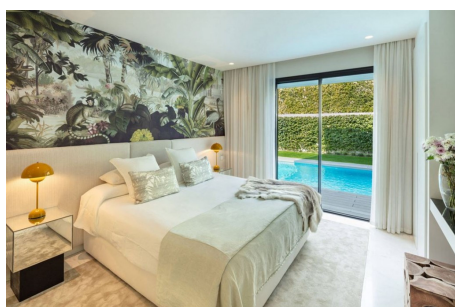
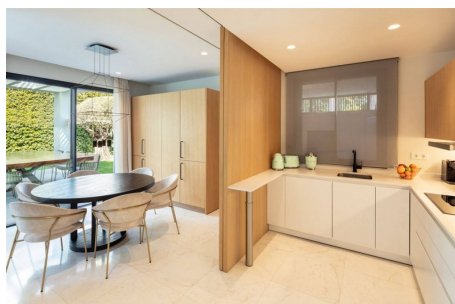
Telephone: +34 637 87 73 78

Email: info@banusimmo.com

La Reserva Del Alczuz, La Azalia 1 -1B, 29679, Benahavis

Banus Immo
MARBELLA

Gallery



Telephone: +34 637 87 73 78

Email: info@banusimmo.com

La Reserva Del Alcuzcuz, La Azalia 1 -1B, 29679, Benahavis

Banus Immo
MARBELLA

Property Description

Location: Guadalmina Alta, Costa del Sol, Spain

Contemporary built villa located in a prime position beside Guadalmina Golf Course. Built over two levels, the property offers privacy, amenities and spacious family living

The villa has just been refurbished and given an open modern interior with a seamless indoor-outdoor living flow. Interiors and bespoke custom-designed furniture were meticulously designed by our in-house Interior Designers.

The villa boasts 4 large and bright double bedrooms each with quality ensuite bathrooms and recently installed fitted wardrobes, an indoor-outdoor living large terrace, private swimming pool and perfectly manicured gardens.

Features:

- Luxury villa
- Great location
- Private pool and garden

Additional Info

For Sale	Beds: 4	Baths: 4.5
Type: Villa (Detached)	Area: 326 sq m	Land Area: 643 sq m
Garden	Pool	Setting: Close To Golf
Close To Schools	Orientation: West	Condition: Excellent
Pool: Private	Climate Control: Hot A/C	Views: Mountain
Panoramic	Private Terrace	Furniture: Not Furnished
Kitchen: Fully Fitted	Garden: Private	Parking: Garage
Built Area : 326 sq m	Land Size : 643 sq m	