



12 Bed Villa (Detached) For Sale

€12,700,000

Benahavís, Costa del Sol

Ref: R4257496

Stunning villa with spectacular panoramic views over the sea, mountains, golf and forests. With a plot of 3.000 m², a total area of 2.310m², spacious terraces and includes 12 bedrooms and 14 bathrooms, a spacious living room, an open plan kitchen equipped with furniture and appliances of the highest quality. It has a separate area with a cinema room, a dance floor with a bar, its own professional wine cellar, a Gym with open views, sauna and the garage for 6 cars. This villa can operate completely autonomously. A solar power plant with a capacity of 60kW and storage batteries for 100kWh provides the house with electricity. High quality artesian water from its own well. Japanese state-of-the-art solutions to improve the efficiency of the house.

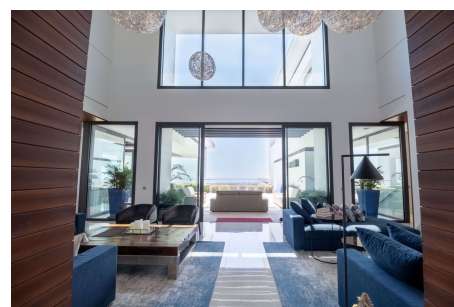
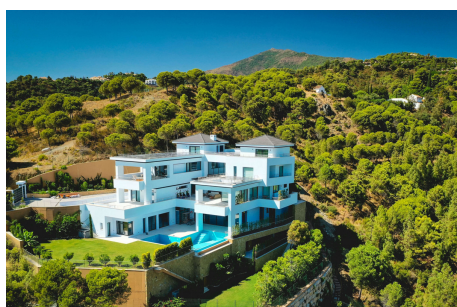
Telephone: +34 637 87 73 78

Email: info@banusimmo.com

La Reserva Del Alczucuz, La Azalia 1 -1B, 29679, Benahavis

BanusImmo
MARBELLA

Gallery



Telephone: +34 637 87 73 78

Email: info@banusimmo.com

La Reserva Del Alcuzcuz, La Azalia 1 -1B, 29679, Benahavis

Banus Immo
MARBELLA

Property Description

Location: Benahavís, Costa del Sol, Spain

Stunning villa with spectacular panoramic views over the sea, mountains, golf and forests.

With a plot of 3.000 m², a total area of 2.310m², spacious terraces and includes 12 bedrooms and 14 bathrooms, a spacious living room, an open plan kitchen equipped with furniture and appliances of the highest quality. It has a separate area with a cinema room, a dance floor with a bar, its own professional wine cellar, a Gym with open views, sauna and the garage for 6 cars.

This villa can operate completely autonomously.

A solar power plant with a capacity of 60kW and storage batteries for 100kWh provides the house with electricity.

High quality artesian water from its own well.

Japanese state-of-the-art solutions to improve the efficiency of the house.

Additional Info

For Sale	Beds: 12	Baths: 14
Type: Villa (Detached)	Area: 3086 sq m	Land Area: 3000 sq m
Garden	Pool	Setting: Frontline Golf
Close To Golf	Close To Town	Close To Forest
Pool: Private	Views: Sea	Mountain
Golf	Country	Panoramic
Garden	Pool	Forest
Covered Terrace	Fitted Wardrobes	Private Terrace
Solarium	Gym	Sauna
Guest Apartment	Storage Room	Utility Room
Ensuite Bathroom	Domotics	Staff Accommodation
Basement	Furniture: Fully Furnished	Kitchen: Fully Fitted
Garden: Private	Parking: Underground	Garage
Covered	More Than One	Private
Category: Golf	Luxury	Contemporary

Built Area : 3086 sq m

Land Size : 3000 sq m

Telephone: +34 637 87 73 78

Email: info@banusimmo.com

La Reserva Del Alcuarcz, La Azalia 1 -1B, 29679, Benahavis

Banus Immo[®]
MARBELLA