

2 Bed Apartment For Sale

€395,000

La Mairena, Costa del Sol

Ref: R4255195

This remarkable elevated garden apartment, located in a peaceful area, provides the best of both worlds - a tranquil and private atmosphere while still being close to all the action. The property is large, surrounded by lush green zones, with large windows allowing lots of natural light to flow through. The complex includes two pools and a private garden with direct access to the pool. The views from here are simply amazing - the blue of the sea, the mountains in the distance, and the rolling hills all in view. The property is only 8 minutes away from the beach by car, allowing you to enjoy the beach during the day and return to the peaceful atmosphere of the property in the evening. The property has been designed for modern living in mind and is ideal for relaxing and entertaining. Wit...

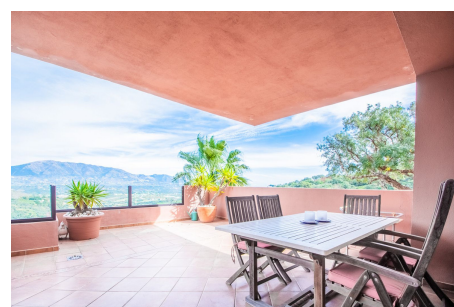
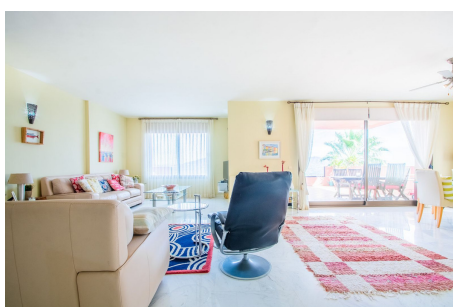
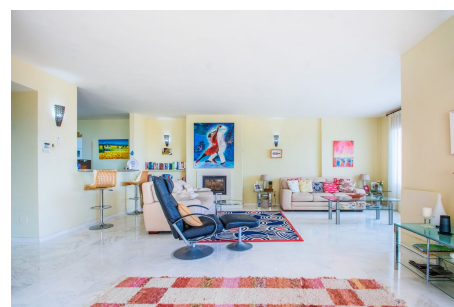
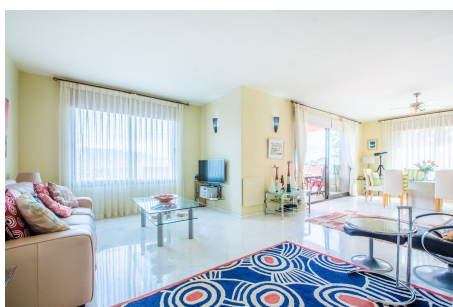
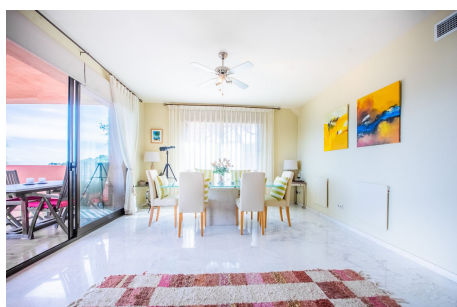
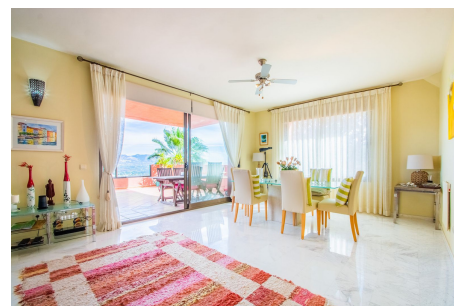
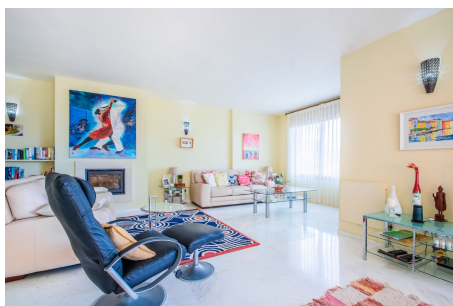
Telephone: +34 637 87 73 78

Email: info@banusimmo.com

La Reserva Del Alczucz, La Azalia 1 -1B, 29679, Benahavis

Banus Immo
MARBELLA

Gallery



Telephone: +34 637 87 73 78

Email: info@banusimmo.com

La Reserva Del Alcuizcuz, La Azalia 1 -1B, 29679, Benahavis

Banus Immo
MARBELLA

Property Description

Location: La Mairena, Costa del Sol, Spain

This remarkable elevated garden apartment, located in a peaceful area, provides the best of both worlds - a tranquil and private atmosphere while still being close to all the action.

The property is large, surrounded by lush green zones, with large windows allowing lots of natural light to flow through. The complex includes two pools and a private garden with direct access to the pool. The views from here are simply amazing - the blue of the sea, the mountains in the distance, and the rolling hills all in view.

The property is only 8 minutes away from the beach by car, allowing you to enjoy the beach during the day and return to the peaceful atmosphere of the property in the evening.

The property has been designed for modern living in mind and is ideal for relaxing and entertaining. With its combination of fabulous views, luxurious atmosphere, and close proximity to the beach, this property is the perfect spot for your dream home.

Additional Info

For Sale	Beds: 2	Baths: 2
Type: Apartment	Area: 215 sq m	Garden
Pool	Setting: Frontline Golf	Suburban
Mountain Pueblo	Close To Golf	Close To Shops
Close To Schools	Close To Forest	Urbanisation
Orientation: East	South East	Condition: Excellent
Pool: Communal	Climate Control: Air Conditioning	Pre Installed A/C
Hot A/C	Cold A/C	Fireplace
Views: Sea	Mountain	Country
Panoramic	Courtyard	Forest
Lift	Fitted Wardrobes	Private Terrace
Satellite TV	WiFi	Access for people with reduced mobility
Marble Flooring	Barbeque	Double Glazing
Fiber Optic	Furniture: Optional	Kitchen: Fully Fitted
Garden: Communal	Private	Security: Gated Complex

Entry Phone

Parking: Open

Communal

Category: Resale

Built Area : 215 sq m

Telephone: +34 637 87 73 78

Email: info@banusimmo.com

La Reserva Del Alczucz, La Azalia 1 -1B, 29679, Benahavis

Banus Immo[®]
MARBELLA