



## 3 Bed Townhouse For Sale

**€515,000**

**Atalaya, Costa del Sol**

**Ref: R4243546**

Large spacious townhouse with great potential. In the prestigious area of Monte Biarritz next to the famous Atalaya golf club. The house is located in a private and secure urbanisation with green areas, gardens and swimming pool. The ground floor of the house has a fully equipped kitchen and a large living-dining room with access to a terrace with panoramic views and the garden. On the first floor, there are three big bedrooms with fitted wardrobes and two bathrooms. The house has a large basement of 64 square metres, which can be converted into extra rooms or a flat with independent access. Ideal for investors. Community fee per year ~€2600 Ibi ~ 1000 euros Garbage ~ 150 euros

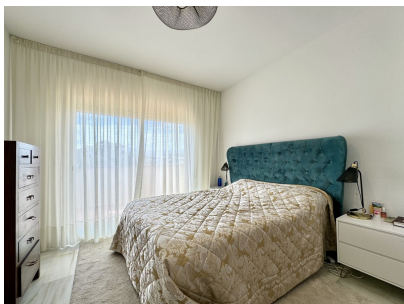
Telephone: +34 637 87 73 78

Email: [info@banusimmo.com](mailto:info@banusimmo.com)

La Reserva Del Alcuzcuz, La Azalia 1 -1B, 29679, Benahavis

*BanusImmo*  
MARBELLA

# Gallery



Telephone: +34 637 87 73 78

Email: [info@banusimmo.com](mailto:info@banusimmo.com)

La Reserva Del Alcuzcuz, La Azalia 1 -1B, 29679, Benahavis

*BanusImmo*  
MARBELLA

# Property Description

**Location:** Atalaya, Costa del Sol, Spain

Large spacious townhouse with great potential. In the prestigious area of Monte Biarritz next to the famous Atalaya golf club. The house is located in a private and secure urbanisation with green areas, gardens and swimming pool.

The ground floor of the house has a fully equipped kitchen and a large living-dining room with access to a terrace with panoramic views and the garden.

On the first floor, there are three big bedrooms with fitted wardrobes and two bathrooms.

The house has a large basement of 64 square metres, which can be converted into extra rooms or a flat with independent access.

Ideal for investors.

Community fee per year ~€2600

Ibi ~ 1000 euros

Garbage ~ 150 euros

# Additional Info

For Sale	Beds: 3	Baths: 2
Type: Townhouse	Area: 245 sq m	Garden
Pool	Setting: Close To Golf	Close To Shops
Close To Sea	Close To Town	Close To Schools
Urbanisation	Condition: Excellent	Pool: Communal
Climate Control: Air Conditioning	Hot A/C	Cold A/C
Fireplace	Views: Mountain	Panoramic
Garden	Courtyard	Fitted Wardrobes
Near Transport	Private Terrace	Satellite TV
WiFi	Storage Room	Utility Room
Ensuite Bathroom	Marble Flooring	Barbeque
Double Glazing	Kitchen: Fully Fitted	Garden: Communal
Private	Security: Alarm System	Safe
Parking: Garage	Covered	More Than One
Private	Category: Golf	Holiday Homes

Investment

Built Area : 245 sq m

Telephone: +34 637 87 73 78

Email: [info@banusimmo.com](mailto:info@banusimmo.com)

La Reserva Del Alcuzcuz, La Azalia 1 -1B, 29679, Benahavis

*BanusImmo*<sup>®</sup>  
MARBELLA