

Plot For Sale

Sotogrande, Costa del Sol

€1,100,000

Ref: R4223578

We offer this impressive plot in the countryside of Gibraltar, specifically in Sotogrande. Fantastic panoramic views thanks to its unbeatable location. All supplies enabled, paved road, sewerage, sidewalks, public lighting and easy access to the highway. Sotogrande International School at 900m. It is a land with 2838 Sq m with a project already developed and on plans of a spectacular villa with 7 bedrooms, 7 bathrooms, living room, dining room, kitchen, garage with 211 Sq m, Spa, GYM, Home cinema, garden, indoor pool and Exterior. This villa would consist of 580 useful Sq m, distributed over 2 floors plus a basement. Estimated construction time 1 year and a half. Construction license, topographic and geological plans. Call us if you want to know more about this proposal and we will inform...

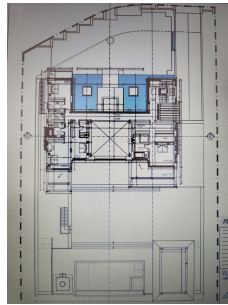
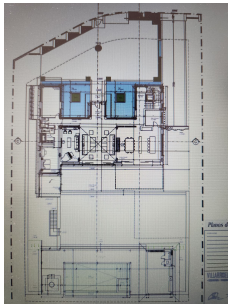
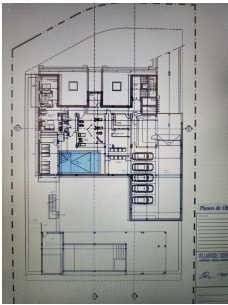
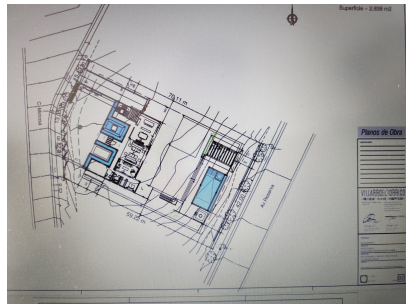
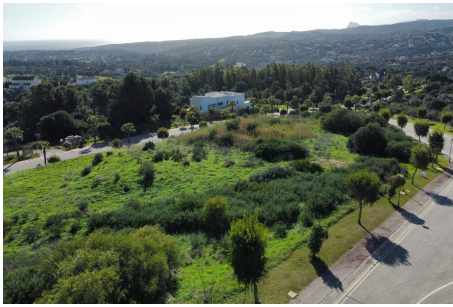
Telephone: +34 637 87 73 78

Email: info@banusimmo.com

La Reserva Del Alcuzcuz, La Azalia 1 -1B, 29679, Benahavis

Banus Immo
MARBELLA

Gallery



Telephone: +34 637 87 73 78

Email: info@banusimmo.com

La Reserva Del Alcuzeuz, La Azalia 1 -1B, 29679, Benahavis

Banus Immo
MARBELLA

Property Description

Location: Sotogrande, Costa del Sol, Spain

We offer this impressive plot in the countryside of Gibraltar, specifically in Sotogrande. Fantastic panoramic views thanks to its unbeatable location.

All supplies enabled, paved road, sewerage, sidewalks, public lighting and easy access to the highway. Sotogrande International School at 900m.

It is a land with 2838 Sq m with a project already developed and on plans of a spectacular villa with 7 bedrooms, 7 bathrooms, living room, dining room, kitchen, garage with 211 Sq m, Spa, GYM, Home cinema, garden, indoor pool and Exterior. This villa would consist of 580 useful Sq m, distributed over 2 floors plus a basement. Estimated construction time 1 year and a half. Construction license, topographic and geological plans.

Call us if you want to know more about this proposal and we will inform you in detail. Possibility of acquiring an independent plot of the project. (Only plot €990,000. With project €5,500,000)

Additional Info

For Sale	Type: Plot	Land Area: 2838 sq m
Setting: Close To Golf	Close To Port	Close To Shops
Close To Sea	Close To Town	Close To Schools
Close To Marina	Urbanisation	Orientation: South
Condition: Excellent	Views: Sea	Golf
Country	Panoramic	Utilities: Electricity
Drinkable Water	Telephone	Gas
Category: Golf	Investment	Off Plan
With Planning Permission	Land Size : 2838 sq m	

Telephone: +34 637 87 73 78

Email: info@banusimmo.com

La Reserva Del Alcuzcuz, La Azalia 1 -1B, 29679, Benahavis

Banus Immo
MARBELLA