

## 4 Bed Townhouse For Sale

# €650,000

Estepona, Costa del Sol

Ref: R4147831

Town House for sale in , Estepona with 4 bedrooms, 4 bathrooms, 1 toilet and with orientation south/west. Regarding property dimensions, it has 270 m<sup>2</sup> built and 124 m<sup>2</sup> plot. Has the following facilities amenities near, transport near, utility room, solarium, double glazing, telephone, private terrace, living room, mountain view, close to children playground, close to sea / beach, close to golf, uncovered terrace, separate dining room, good condition, urban view, close to shops, close to town, close to port and close to schools.

Telephone: +34 637 87 73 78

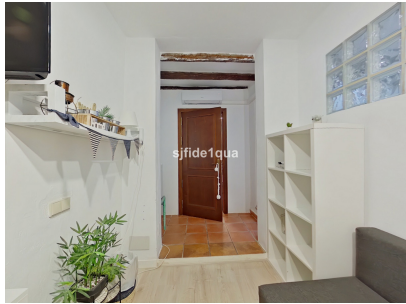
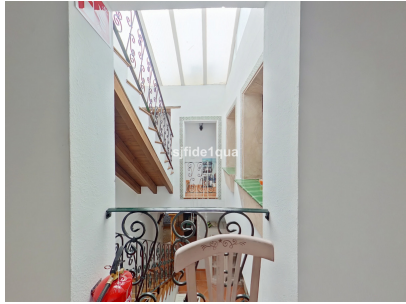
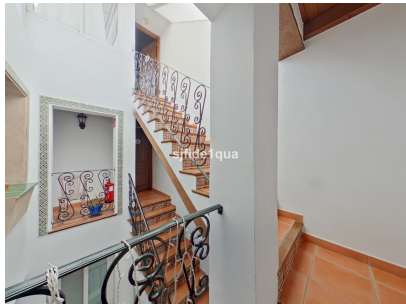
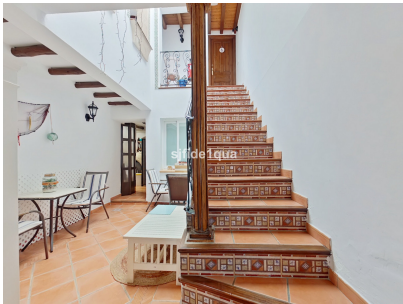
Email: [info@banusimmo.com](mailto:info@banusimmo.com)

La Reserva Del Aluczcuz, La Azalia 1 -1B, 29679, Benahavis

*Banus Immo*  
MARBELLA



# Gallery



Telephone: +34 637 87 73 78

Email: [info@banusimmo.com](mailto:info@banusimmo.com)

La Reserva Del Alczuz, La Azalia 1 -1B, 29679, Benahavis

*Banus Immo*  
MARBELLA

# Property Description

**Location:** Estepona, Costa del Sol, Spain

Town House for sale in , Estepona with 4 bedrooms, 4 bathrooms, 1 toilet and with orientation south/west. Regarding property dimensions, it has 270 m<sup>2</sup> built and 124 m<sup>2</sup> plot. Has the following facilities amenities near, transport near, utility room, solarium, double glazing, telephone, private terrace, living room, mountain view, close to children playground, close to sea / beach, close to golf, uncovered terrace, separate dining room, good condition, urban view, close to shops, close to town, close to port and close to schools.

Telephone: +34 637 87 73 78

Email: [info@banusimmo.com](mailto:info@banusimmo.com)

La Reserva Del Alcuzcuz, La Azalia 1 -1B, 29679, Benahavis

*Banus Immo*<sup>®</sup>  
MARBELLA

# Additional Info

For Sale	Beds: 4	Baths: 4.5
Type: Townhouse	Area: 270 sq m	Land Area: 124 sq m
Setting: Close To Port	Close To Shops	Close To Sea
Close To Town	Close To Schools	Orientation: South West
Condition: Good	Views: Mountain	Urban
Near Transport	Private Terrace	Solarium
Utility Room	Double Glazing	Utilities: Telephone
Built Area : 270 sq m	Land Size : 124 sq m	