

3 Bed Apartment For Sale

€690,000

Puerto Banús, Costa del Sol

Ref: R2895680

RENTED - Fantastic Opportunity a few mtrs. of the beach!! Apartment with 3 bedrooms and 3 bathrooms in a gated complex located 300 mtrs. From the beach and with excellent access. 5 min. From Puerto Banus, 5 min. From the center of San Pedro and 50 min. From the Malaga Airport. This apartment consists of entrance hall, large and bright living room with access to the south facing terrace overlooking the garden. The master bedroom is ensuite and all bedrooms have fitted wardrobes. The kitchen is very large, has laundry area and space for a breakfast table. This property includes in the price 1 parking space . Features: Air conditioning, 24 hour security, communal pool, marble floors.

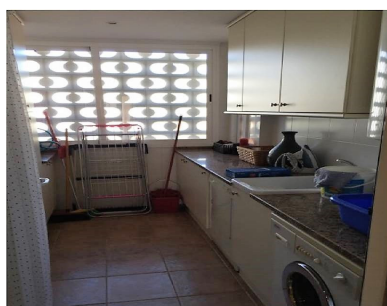
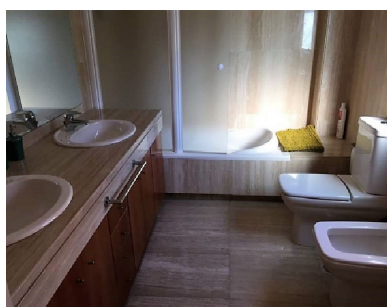
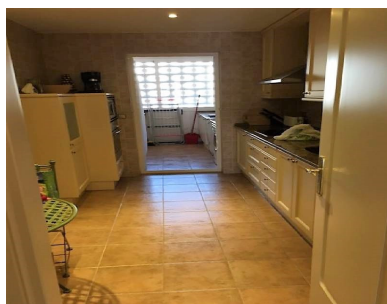
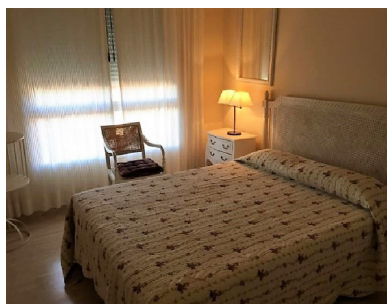
Telephone: +34 637 87 73 78

Email: info@banusimmo.com

La Reserva Del Alcuarcz, La Azalia 1 -1B, 29679, Benahavis

BanusImmo
MARBELLA

Gallery



Telephone: +34 637 87 73 78

Email: info@banusimmo.com

La Reserva Del Alczucuz, La Azalia 1 -1B, 29679, Benahavis

Banus Immo
MARBELLA

Property Description

Location: Puerto Banús, Costa del Sol, Spain

RENTED - Fantastic Opportunity a few mtrs. of the beach!!

Apartment with 3 bedrooms and 3 bathrooms in a gated complex located 300 mtrs. From the beach and with excellent access. 5 min. From Puerto Banus, 5 min. From the center of San Pedro and 50 min. From the Malaga Airport. This apartment consists of entrance hall, large and bright living room with access to the south facing terrace overlooking the garden. The master bedroom is ensuite and all bedrooms have fitted wardrobes. The kitchen is very large, has laundry area and space for a breakfast table. This property includes in the price 1 parking space . Features: Air conditioning, 24 hour security, communal pool, marble floors.

Telephone: +34 637 87 73 78

Email: info@banusimmo.com

La Reserva Del Alcuarczuz, La Azalia 1 -1B, 29679, Benahavis

BanusImmo[®]
MARBELLA

Additional Info

For Sale	Beds: 3	Baths: 3
Type: Apartment	Area: 210 sq m	Garden
Pool	Setting: Beachside	Close To Port
Close To Sea	Urbanisation	Orientation: South
Condition: Excellent	Pool: Communal	Climate Control: Air Conditioning
Views: Garden	Lift	Fitted Wardrobes
Private Terrace	Storage Room	Utility Room
Ensuite Bathroom	Marble Flooring	Double Glazing
Furniture: Optional	Kitchen: Fully Fitted	Garden: Communal
Security: Gated Complex	24 Hour Security	Parking: Garage
More Than One	Category: Resale	Built Area : 210 sq m