



# 1 Bed Penthouse For Sale

# €540,000

**Puerto Banús, Costa del Sol**

**Ref: R4124302**

Spectacular views from this third floor with 1 bedroom, 1 bathroom, with spectacular views of the port, on the first line of Puerto Banus, to reform. The property is in a perfect location just 1 minute walk from the beach and a few steps from restaurants, cafes, boutiques, and all the services you may need. The versatility of this apartment makes it a unique opportunity to buy a property on the Costa del Sol, as it is ideal for holidays, to live, to rent long or short term and even as an office.

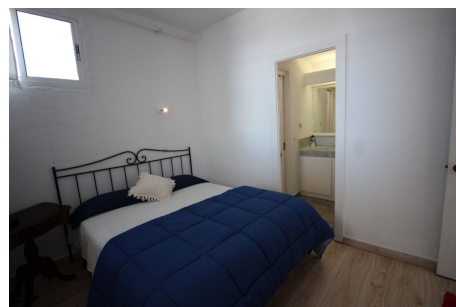
Telephone: +34 637 87 73 78

Email: [info@banusimmo.com](mailto:info@banusimmo.com)

La Reserva Del Alczucz, La Azalia 1 -1B, 29679, Benahavis

*BanusImmo*  
MARBELLA

# Gallery



Telephone: +34 637 87 73 78

Email: [info@banusimmo.com](mailto:info@banusimmo.com)

La Reserva Del Alcuzcuz, La Azalia 1 -1B, 29679, Benahavis

*Banus Immo*  
MARBELLA

# Property Description

**Location:** Puerto Banús, Costa del Sol, Spain

Spectacular views from this third floor with 1 bedroom, 1 bathroom, with spectacular views of the port, on the first line of Puerto Banus, to reform. The property is in a perfect location just 1 minute walk from the beach and a few steps from restaurants, cafes, boutiques, and all the services you may need. The versatility of this apartment makes it a unique opportunity to buy a property on the Costa del Sol, as it is ideal for holidays, to live, to rent long or short term and even as an office.

Telephone: +34 637 87 73 78

Email: [info@banusimmo.com](mailto:info@banusimmo.com)

La Reserva Del Alczucz, La Azalia 1 -1B, 29679, Benahavis

*BanusImmo*<sup>®</sup>  
MARBELLA

# Additional Info

For Sale	Beds: 1	Baths: 1
Type: Penthouse	Area: 80 sq m	Setting: Beachside
Port	Close To Sea	Close To Schools
Marina	Orientation: South	Condition: Restoration Required
Views: Sea	Port	Fitted Wardrobes
Marble Flooring	Furniture: Not Furnished	Kitchen: Fully Fitted
Category: Bargain	Cheap	Holiday Homes
Investment	Built Area : 80 sq m	