

6 Bed Villa (Detached) For Sale

€2,895,000

Benahavís, Costa del Sol

Ref: R4116196

OFF PLAN – LUXURY CONTEMPORARY ECOLOGICAL VILLA in Monte Mayor, Benahavis with panoramic views and views of the lake. The ground floor: entrance hall with wheelchair lift, guest toilet, technical installations room, spacious living/dining room with large open plan fully fitted kitchen with Bosch appliances and separate pantry, furthermore there is on this floor a separate bedroom/study with en-suite bathroom, large, covered terraces overlooking the large 51,50 m2 heated swimming pool. On the first floor: lift, landing, master bedroom with master bathroom and large dressing room and of course a huge private terrace. A hallway leads you to another bedroom with 2 en-suite bathrooms and a terrace. In the semi-basement, you have a huge carport with stairs with a path that leads you to the main...

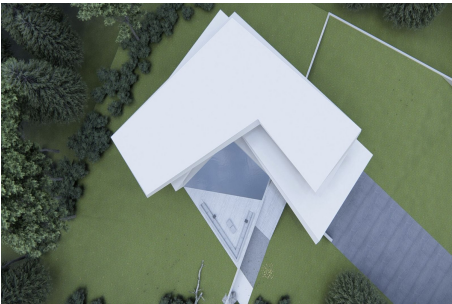
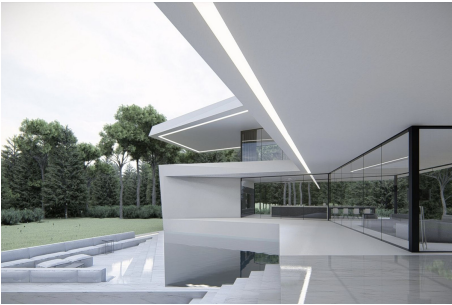
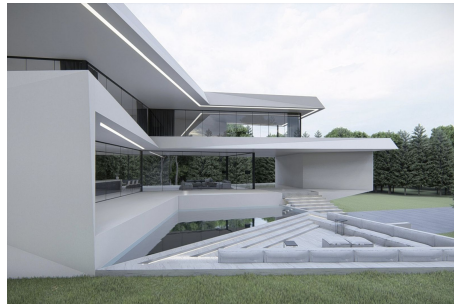
Telephone: +34 637 87 73 78

Email: info@banusimmo.com

La Reserva Del Alczucuz, La Azalia 1 -1B, 29679, Benahavis

Banus Immo
MARBELLA

Gallery



Property Description

Location: Benahavís, Costa del Sol, Spain

OFF PLAN – LUXURY CONTEMPORARY ECOLOGICAL VILLA in Monte Mayor, Benahavis with panoramic views and views of the lake.

The ground floor: entrance hall with wheelchair lift, guest toilet, technical installations room, spacious living/dining room with large open plan fully fitted kitchen with Bosch appliances and separate pantry, furthermore there is on this floor a separate bedroom/study with en-suite bathroom, large, covered terraces overlooking the large 51,50 m2 heated swimming pool.

On the first floor: lift, landing, master bedroom with master bathroom and large dressing room and of course a huge private terrace. A hallway leads you to another bedroom with 2 en-suite bathrooms and a terrace.

In the semi-basement, you have a huge carport with stairs with a path that leads you to the main entrance.

Furthermore, the lift takes you to this floor where you find another bedroom with a bathroom en suite, a separate flat and a games room.

There is a completely separate flat which has a living/fitted kitchen area with a bedroom, a dressing room and an en-suite bathroom. The separate flat is accessible from the garage but could also be accessed from the lift area.

Construction time approx. 10 to 12 months after licenses.

- Saloni interior and exterior floor s90x90
- Bathroom walls from Saloni 45x90
- Fully fitted kitchens with Bosch appliances
- Windows 5+5/chamber/6+6
- Elevator
- Roca or Jacob Delafon bathrooms
- Aerothermia-airconditioning

Warranties

- 10 years on the structure
- 3 years on installations
- 3 years on the finishings

Additional Info

For Sale	Beds: 6	Baths: 9
Type: Villa (Detached)	Area: 1446 sq m	Land Area: 7500 sq m
Garden	Pool	Setting: Mountain Pueblo
Close To Golf	Close To Town	Close To Forest
Urbanisation	Orientation: East	South East
South	South West	West
Condition: New Construction	Pool: Private	Climate Control: Air Conditioning
Hot A/C	Cold A/C	U/F/H Bathrooms
Views: Mountain	Panoramic	Garden
Pool	Lake	Covered Terrace
Lift	Fitted Wardrobes	Private Terrace
WiFi	Storage Room	Utility Room
Ensuite Bathroom	Disabled Access	Barbeque
Double Glazing	Restaurant On Site	Basement
Fiber Optic	Handicap access	Furniture: Optional

Kitchen: Fully Fitted	Garden: Private	Easy Maintenance
Security: Alarm System	24 Hour Security	Safe
Parking: Underground	Garage	Covered
Open	More Than One	Private
Utilities: Electricity	Drinkable Water	Telephone
Photovoltaic solar panels	Solar water heating	Category: Golf
Holiday Homes	Investment	Luxury
Off Plan	Contemporary	Built Area : 1446 sq m
Land Size : 7500 sq m		

Telephone: +34 637 87 73 78

Email: info@banusimmo.com

La Reserva Del Alczucz, La Azalia 1 -1B, 29679, Benahavis

BanusImmo
MARBELLA