

4 Bed Villa (Detached) For Sale

€1,310,000

Marbesa, Costa del Sol

Ref: R4095328

off plan possible to chose your details and qualities Detached Villa, Marbesa, Costa del Sol. 4 Bedrooms, 4 Bathrooms, Built 231 m², Terrace 70 m², Garden/Plot 694 m². Setting : Beachside, Close To Sea, Close To Schools. Orientation : South. Condition : Excellent. Pool : Private. Climate Control : Air Conditioning, Hot A/C, Cold A/C. Views : Garden. Features : Covered Terrace, Fitted Wardrobes, Near Transport, Private Terrace, WiFi, Storage Room, Utility Room, Ensuite Bathroom, Double Glazing, Basement. Kitchen : Partially Fitted. Garden : Private. Parking : Garage, Covered, More Than One, Private. Category : Luxury, Resale, Contemporary.

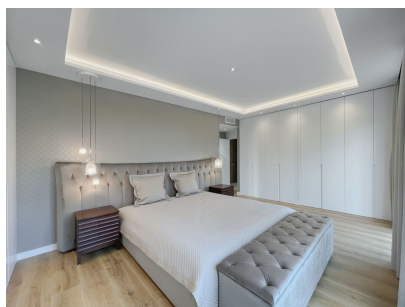
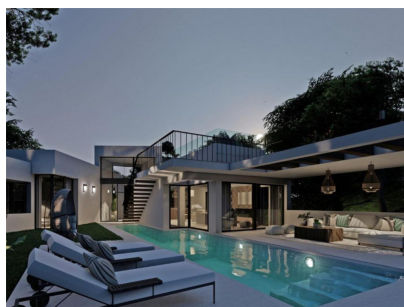
Telephone: +34 637 87 73 78

Email: info@banusimmo.com

La Reserva Del Alczucuz, La Azalia 1 -1B, 29679, Benahavis

Banus Immo
MARBELLA

Gallery



Telephone: +34 637 87 73 78

Email: info@banusimmo.com

La Reserva Del Alcuarcz, La Azalia 1 -1B, 29679, Benahavis

Banus Immo
MARBELLA

Property Description

Location: Marbesa, Costa del Sol, Spain
off plan posible to chose your details and qualities

Detached Villa, Marbesa, Costa del Sol.

4 Bedrooms, 4 Bathrooms, Built 231 m², Terrace 70 m², Garden/Plot 694 m².

Setting : Beachside, Close To Sea, Close To Schools.

Orientation : South.

Condition : Excellent.

Pool : Private.

Climate Control : Air Conditioning, Hot A/C, Cold A/C.

Views : Garden.

Features : Covered Terrace, Fitted Wardrobes, Near Transport, Private Terrace, WiFi, Storage Room, Utility Room, Ensuite Bathroom, Double Glazing, Basement.

Kitchen : Partially Fitted.

Garden : Private.

Parking : Garage, Covered, More Than One, Private.

Category : Luxury, Resale, Contemporary.

Additional Info

For Sale	Beds: 4	Baths: 4
Type: Villa (Detached)	Area: 301 sq m	Land Area: 694 sq m
Garden	Pool	Setting: Beachside
Close To Sea	Close To Schools	Orientation: South
Condition: Excellent	Pool: Private	Climate Control: Air Conditioning
Hot A/C	Cold A/C	Views: Garden
Covered Terrace	Fitted Wardrobes	Near Transport
Private Terrace	WiFi	Storage Room
Utility Room	Ensuite Bathroom	Double Glazing
Basement	Kitchen: Partially Fitted	Garden: Private
Parking: Garage	Covered	More Than One
Private	Category: Luxury	Resale
Contemporary	Built Area : 301 sq m	Land Size : 694 sq m

Telephone: +34 637 87 73 78

Email: info@banusimmo.com

La Reserva Del Alcuzczuz, La Azalia 1 -1B, 29679, Benahavis

BanusImmo
MARBELLA