

2 Bed Apartment For Sale

€590,000

Puerto Banús, Costa del Sol

Ref: R4107355

Ground Floor Apartment for sale in El Embrujo Playa, Marbella Cozy apartment for sale near Puerto Banús, with a constructed area of 160 m2. Located in a beautiful and quiet residential complex with 24 hour security, tropical gardens and swimming pools. The urbanization is conveniently located, close to the famous beaches of Marbella. Within walking distance of all services, shops, restaurants, gyms... The apartment offered is located on the ground floor of a four-storey building with an elevator. With a beautiful open view of the garden. It is distributed as follows: an entrance hall, living room with direct access to a large terrace overlooking the garden, 2 bedrooms, 2 bathrooms and a fully equipped kitchen with a separate utility room. At the moment there is a great demand for rental i...

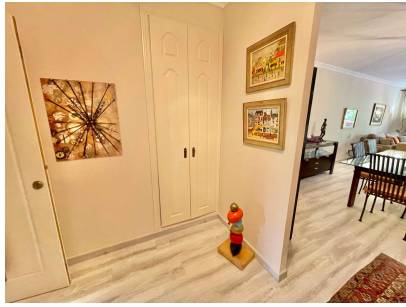
Telephone: +34 637 87 73 78

Email: info@banusimmo.com

La Reserva Del Alcuzeuz, La Azalia 1 -1B, 29679, Benahavis

BanusImmo
MARBELLA

Gallery



Property Description

Location: Puerto Banús, Costa del Sol, Spain

Ground Floor Apartment for sale in El Embrujo Playa, Marbella

Cozy apartment for sale near Puerto Banús, with a constructed area of 160 m2. Located in a beautiful and quiet residential complex with 24 hour security, tropical gardens and swimming pools. The urbanization is conveniently located, close to the famous beaches of Marbella. Within walking distance of all services, shops, restaurants, gyms...

The apartment offered is located on the ground floor of a four-storey building with an elevator. With a beautiful open view of the garden. It is distributed as follows: an entrance hall, living room with direct access to a large terrace overlooking the garden, 2 bedrooms, 2 bathrooms and a fully equipped kitchen with a separate utility room.

At the moment there is a great demand for rental in the area

Additional Info

For Sale	Beds: 2	Baths: 2
Type: Apartment	Area: 160 sq m	Garden
Pool	Setting: Beachside	Close To Golf
Close To Port	Close To Shops	Close To Sea
Close To Town	Close To Schools	Orientation: South
Condition: Excellent	Pool: Communal	Climate Control: Air Conditioning
Views: Garden	Pool	Near Transport
Ensuite Bathroom	Garden: Communal	Parking: Communal
Built Area : 160 sq m		