

3 Bed Penthouse For Sale

€400,000

Marbella, Costa del Sol

Ref: R4093774

Possible to enclosed one of the terrace like others neighbors done and convert in more bedrooms Penthouse, Marbella, Costa del Sol. 3 Bedrooms, 2 Bathrooms, Built 110 m², Terrace 150 m². Setting : Town, Suburban, Commercial Area, Village, Close To Port, Close To Shops, Close To Town, Close To Schools, Close To Marina, Urbanisation. Orientation : North East. Condition : Good. Climate Control : Air Conditioning, Hot A/C, Cold A/C. Views : Mountain, Port. Features : Covered Terrace, Lift, Near Transport, Private Terrace, Solarium, WiFi, Ensuite Bathroom. Furniture : Optional. Kitchen : Fully Fitted. Garden : Communal. Security : Gated Complex.

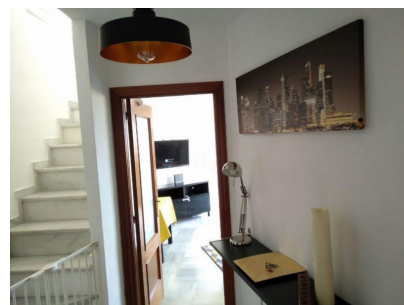
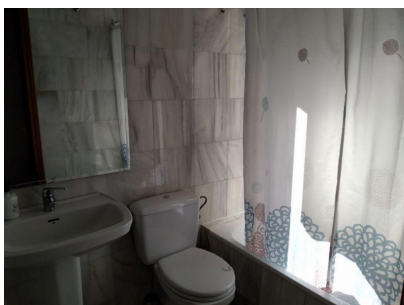
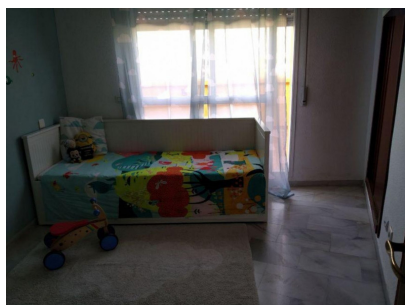
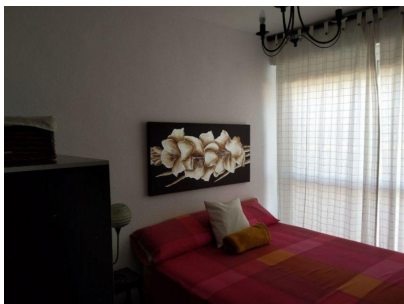
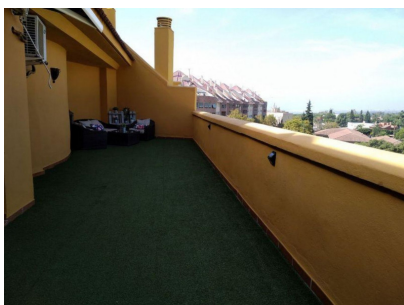
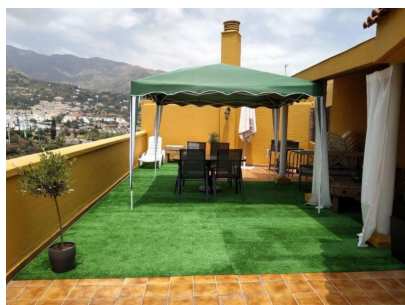
Telephone: +34 637 87 73 78

Email: info@banusimmo.com

La Reserva Del Alczucuz, La Azalia 1 -1B, 29679, Benahavis

Banus Immo
MARBELLA

Gallery



Telephone: +34 637 87 73 78

Email: info@banusimmo.com

La Reserva Del Alcuzcuz, La Azalia 1 -1B, 29679, Benahavis

Banus Immo
MARBELLA

Property Description

Location: Marbella, Costa del Sol, Spain

Possible to enclosed one of the terrace like others neighbors done and convert in more bedrooms

Penthouse, Marbella, Costa del Sol.

3 Bedrooms, 2 Bathrooms, Built 110 m², Terrace 150 m².

Setting : Town, Suburban, Commercial Area, Village, Close To Port, Close To Shops, Close To Town, Close To Schools, Close To Marina, Urbanisation.

Orientation : North East.

Condition : Good.

Climate Control : Air Conditioning, Hot A/C, Cold A/C.

Views : Mountain, Port.

Features : Covered Terrace, Lift, Near Transport, Private Terrace, Solarium, WiFi, Ensuite Bathroom.

Furniture : Optional.

Kitchen : Fully Fitted.

Garden : Communal.

Security : Gated Complex.

Additional Info

For Sale	Beds: 3	Baths: 2
Type: Penthouse	Area: 260 sq m	Garden
Setting: Town	Suburban	Commercial Area
Village	Close To Port	Close To Shops
Close To Town	Close To Schools	Close To Marina
Urbanisation	Orientation: North East	Condition: Good
Climate Control: Air Conditioning	Hot A/C	Cold A/C
Views: Mountain	Port	Covered Terrace
Lift	Near Transport	Private Terrace
Solarium	WiFi	Ensuite Bathroom
Furniture: Optional	Kitchen: Fully Fitted	Garden: Communal
Security: Gated Complex	Built Area : 260 sq m	