

## 3 Bed Townhouse For Sale

**€610,000**

**Puerto Banús, Costa del Sol**

**Ref: R4086670**

Townhouse, Marbella, Costa del Sol. 3 Bedrooms, 3 Bathrooms, Built 129 m<sup>2</sup>, Terrace 16 m<sup>2</sup>. Setting : Commercial Area, Close To Golf, Close To Shops, Close To Sea, Close To Schools, Urbanisation. Orientation : East, West. Condition : Excellent. Pool : Communal. Climate Control : Air Conditioning, Hot A/C, Cold A/C. Views : Garden. Features : Covered Terrace, Fitted Wardrobes, Near Transport, Private Terrace, Satellite TV, WiFi, Storage Room, Ensuite Bathroom, Double Glazing. Kitchen : Fully Fitted. Garden : Communal. Security : Gated Complex. Parking : Underground, Garage, Covered, More Than One, Private. Category : Resale, Contemporary.

Telephone: +34 637 87 73 78

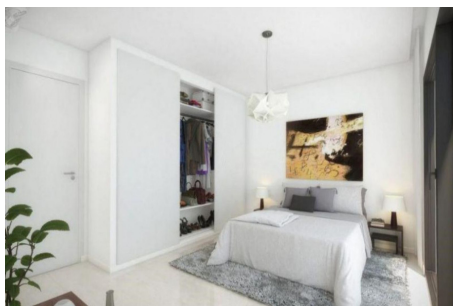
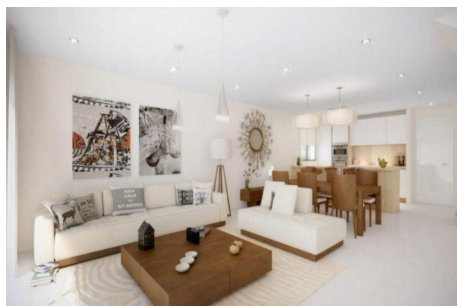
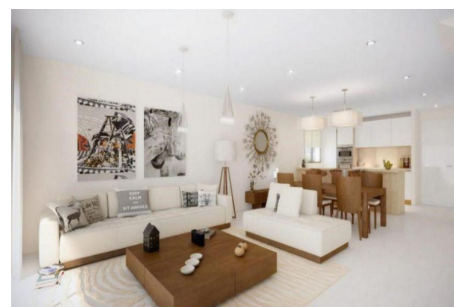
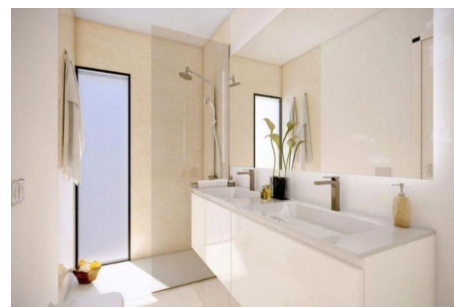
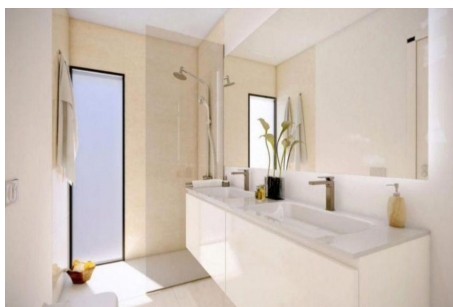
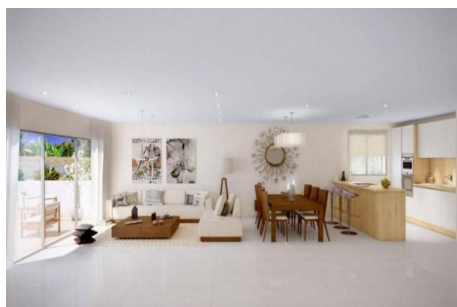
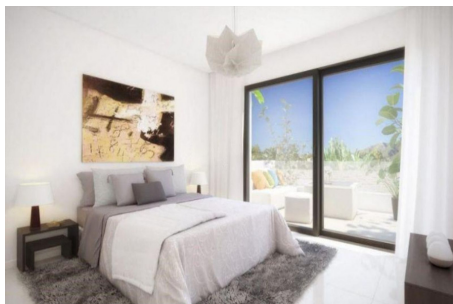
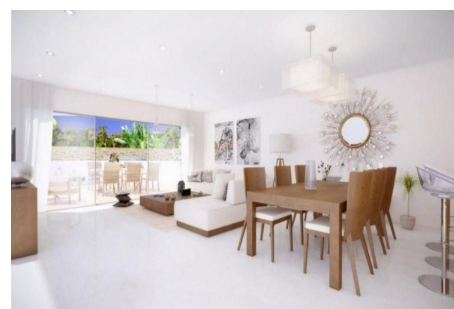
Email: [info@banusimmo.com](mailto:info@banusimmo.com)

La Reserva Del Alcuzeuz, La Azalia 1 -1B, 29679, Benahavis

*BanusImmo*  
MARBELLA



# Gallery



Telephone: +34 637 87 73 78

Email: [info@banusimmo.com](mailto:info@banusimmo.com)

La Reserva Del Alcuizcuz, La Azalia 1 -1B, 29679, Benahavis

*Banus Immo*  
MARBELLA

# Property Description

**Location:** Puerto Banús, Costa del Sol, Spain

Townhouse, Marbella, Costa del Sol.

3 Bedrooms, 3 Bathrooms, Built 129 m<sup>2</sup>, Terrace 16 m<sup>2</sup>.

Setting : Commercial Area, Close To Golf, Close To Shops, Close To Sea, Close To Schools, Urbanisation.

Orientation : East, West.

Condition : Excellent.

Pool : Communal.

Climate Control : Air Conditioning, Hot A/C, Cold A/C.

Views : Garden.

Features : Covered Terrace, Fitted Wardrobes, Near Transport, Private Terrace, Satellite TV, WiFi, Storage Room, Ensuite Bathroom, Double Glazing.

Kitchen : Fully Fitted.

Garden : Communal.

Security : Gated Complex.

Parking : Underground, Garage, Covered, More Than One, Private.

Category : Resale, Contemporary.

# Additional Info

For Sale	Beds: 3	Baths: 3
Type: Townhouse	Area: 145 sq m	Garden
Pool	Setting: Commercial Area	Close To Golf
Close To Shops	Close To Sea	Close To Schools
Urbanisation	Orientation: East	West
Condition: Excellent	Pool: Communal	Climate Control: Air Conditioning
Hot A/C	Cold A/C	Views: Garden
Covered Terrace	Fitted Wardrobes	Near Transport
Private Terrace	Satellite TV	WiFi
Storage Room	Ensuite Bathroom	Double Glazing
Kitchen: Fully Fitted	Garden: Communal	Security: Gated Complex
Parking: Underground	Garage	Covered
More Than One	Private	Category: Resale
Contemporary	Built Area : 145 sq m	

Telephone: +34 637 87 73 78

Email: [info@banusimmo.com](mailto:info@banusimmo.com)

La Reserva Del Alcuzczuz, La Azalia 1 -1B, 29679, Benahavis

*Banus Immo*  
MARBELLA