



3 Bed Villa (Detached) For Sale

€735,000

Fuengirola, Costa del Sol

Ref: R4063603

BEAUTIFUL PAREADO LOCATED IN PEOPLE LOPEZ, IN FULL CENTER OF FUENGIROLA, A FEW MINUTES FROM FERROCARRIL STATIONS, CENTRAL MARKET, BUS, SUPERMARKETS, RESTAURANTS AND BEACH. IT CONSISTS OF 2 FLOORS GROUND FLOOR, HAS HALL, LIVING ROOM, INDEPENDENT KITCHEN WITH DEPARTURE TO A PATIO OF 23M2, ASEO WITH SHOWER, 1 BEDROOMS AND OUTPUT TO A COVERED PORCH OF 23M2. HIGH FLOOR DISTRIBUTED BY HALL WITH D2 BEDROOMS 1 OF THEM WITH BATHROOM IN SUITE AND OTHER FULL BATHROOM. THE BEDROOM HAS OUTPUT TO A TERRACE OF 18M2 WHERE IT HAS VERY NICE VIEWS. THE PARCEL HAS A TOTAL OF 200M2 AND HAS A GARDEN OF 91M2

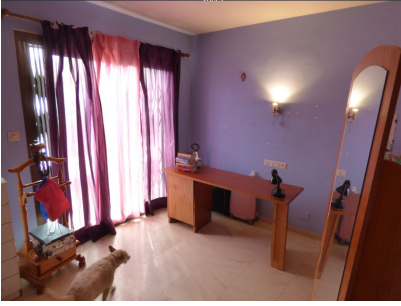
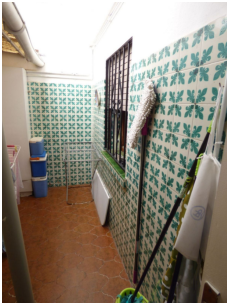
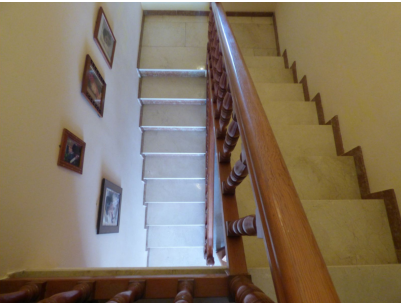
Telephone: +34 637 87 73 78

Email: info@banusimmo.com

La Reserva Del Alczucuz, La Azalia 1 -1B, 29679, Benahavis

BanusImmo
MARBELLA

Gallery



Telephone: +34 637 87 73 78

Email: info@banusimmo.com

La Reserva Del Alcuzcuz, La Azalia 1 -1B, 29679, Benahavis

Property Description

Location: Fuengirola, Costa del Sol, Spain

BEAUTIFUL PAREADO LOCATED IN PEOPLE LOPEZ, IN FULL CENTER OF FUENGIROLA, A FEW MINUTES FROM FERROCARRIL STATIONS, CENTRAL MARKET, BUS, SUPERMARKETS, RESTAURANTS AND BEACH.

IT CONSISTS OF 2 FLOORS

GROUND FLOOR, HAS HALL, LIVING ROOM, INDEPENDENT KITCHEN WITH DEPARTURE TO A PATIO OF 23M², ASEO WITH SHOWER, 1 BEDROOMS AND OUTPUT TO A COVERED PORCH OF 23M².

HIGH FLOOR DISTRIBUTED BY HALL WITH D2 BEDROOMS 1 OF THEM WITH BATHROOM IN SUITE AND OTHER FULL BATHROOM. THE BEDROOM HAS OUTPUT TO A TERRACE OF 18M² WHERE IT HAS VERY NICE VIEWS.

THE PARCEL HAS A TOTAL OF 200M² AND HAS A GARDEN OF 91M²

Additional Info

| | | |
|-----------------------------------|----------------------|----------------------|
| For Sale | Beds: 3 | Baths: 3 |
| Type: Villa (Detached) | Area: 233 sq m | Land Area: 199 sq m |
| Garden | Setting: Town | Commercial Area |
| Village | Close To Port | Close To Shops |
| Close To Sea | Close To Town | Close To Schools |
| Urbanisation | Orientation: South | Condition: Good |
| Climate Control: Air Conditioning | Covered Terrace | Fitted Wardrobes |
| Near Transport | Private Terrace | Utility Room |
| Near Church | Garden: Private | Category: Distressed |
| Built Area : 233 sq m | Land Size : 199 sq m | |