

2 Bed Apartment For Sale

€584,000

Nueva Andalucía, Costa del Sol

Ref: R4082173

Ground Floor Apartment in Aloha Pueblo. It is accessed by a flight of stairs, 2 bedrooms 2 bathrooms, living room with sliding windows leading to a nice terrace. The urbanization is a very charming little town. Community pool and great atmosphere. Access to additional covered parking. In the center of 5 prestigious golf courses. Three restaurants within the urbanization. A beauty center and a sports center within the urbanization. Security guard 24 hours a day 7 days a week. Heated pool from March to October. 5 minutes from supermarkets and small shops

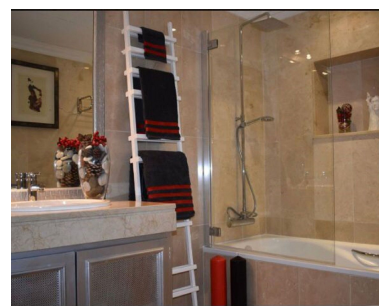
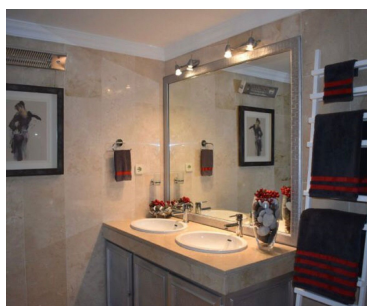
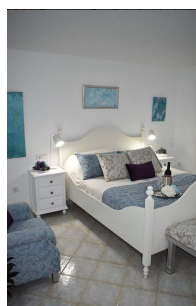
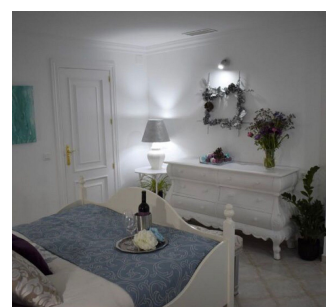
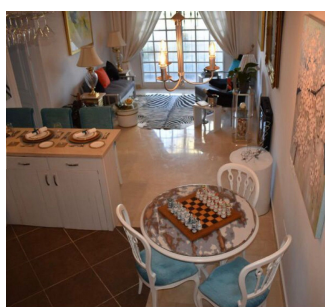
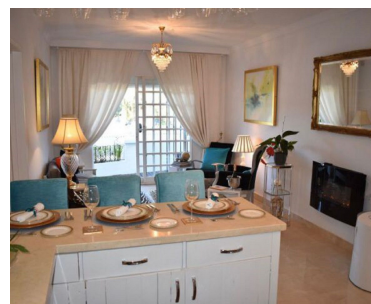
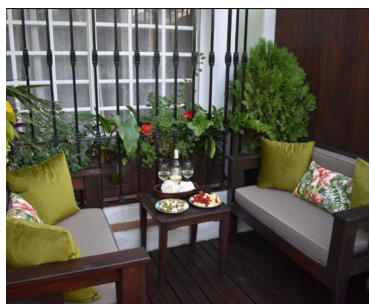
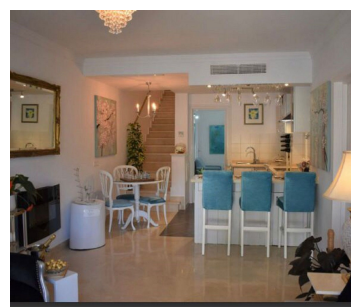
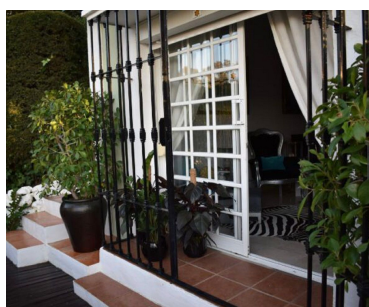
Telephone: +34 637 87 73 78

Email: info@banusimmo.com

La Reserva Del Alcuzeuz, La Azalia 1 -1B, 29679, Benahavis

Banus Immo
MARBELLA

Gallery



Telephone: +34 637 87 73 78

Email: info@banusimmo.com

La Reserva Del Alcuizcuz, La Azalia 1 -1B, 29679, Benahavis

Banus Immo
MARBELLA

Property Description

Location: Nueva Andalucía, Costa del Sol, Spain
Ground Floor Apartment in Aloha Pueblo.

It is accessed by a flight of stairs, 2 bedrooms 2 bathrooms, living room with sliding windows leading to a nice terrace.

The urbanization is a very charming little town. Community pool and great atmosphere.

Access to additional covered parking.

In the center of 5 prestigious golf courses.

Three restaurants within the urbanization.

A beauty center and a sports center within the urbanization.

Security guard 24 hours a day 7 days a week.

Heated pool from March to October.

5 minutes from supermarkets and small shops

Additional Info

For Sale	Beds: 2	Baths: 2
Type: Apartment	Area: 90 sq m	Garden
Pool	Setting: Close To Golf	Close To Schools
Urbanisation	Orientation: West	Condition: Good
Pool: Communal	Views: Garden	Private Terrace
Storage Room	Kitchen: Fully Fitted	Garden: Communal
Security: Gated Complex	Parking: Garage	Category: Resale
Built Area : 90 sq m		