

3 Bed Penthouse For Sale

€375,000

Marbella, Costa del Sol

Ref: R4058029

Spacious three-bedroom duplex penthouse with panoramic views in one of the quietest and most sought-after urbanizations on the Golden Mile, Coto Real. It consists of two floors distributed in an entrance hall, three exterior bedrooms, two of them en suite and with a dressing room, one located on the ground floor with sea views and the other on the upper floor with access to the large terrace with views of La Concha, another exterior bedroom and separate bathroom. To enjoy the views from any point of the property, we have an equipped kitchen and a spacious living room with a dining area that gives us access to the extensive terrace. It has air conditioning.

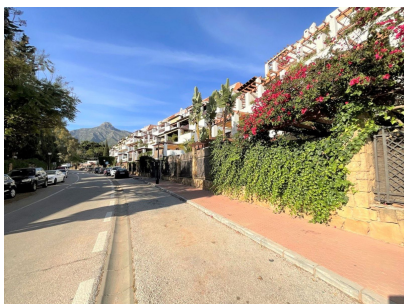
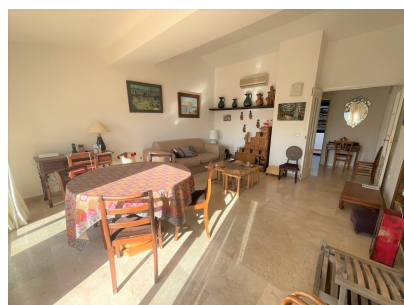
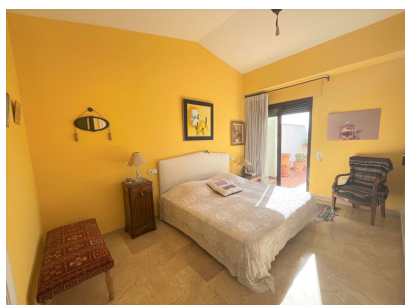
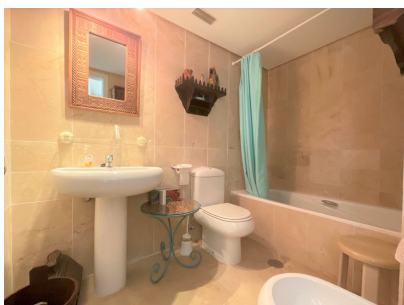
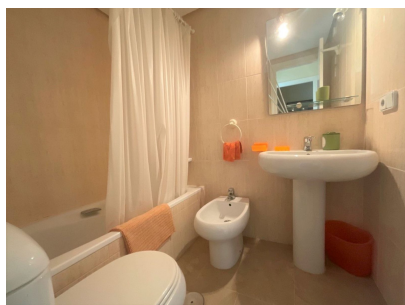
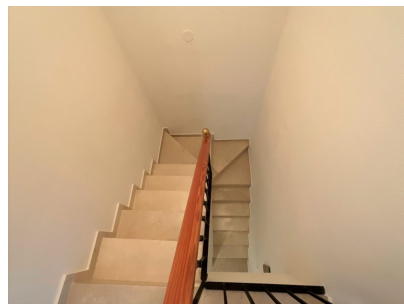
Telephone: +34 637 87 73 78

Email: info@banusimmo.com

La Reserva Del Alczucuz, La Azalia 1 -1B, 29679, Benahavis

Banus Immo
MARBELLA

Gallery



Telephone: +34 637 87 73 78

Email: info@banusimmo.com

La Reserva Del Alcuarcz, La Azalia 1 -1B, 29679, Benahavis

Banus Immo
MARBELLA

Property Description

Location: Marbella, Costa del Sol, Spain

Spacious three-bedroom duplex penthouse with panoramic views in one of the quietest and most sought-after urbanizations on the Golden Mile, Coto Real. It consists of two floors distributed in an entrance hall, three exterior bedrooms, two of them en suite and with a dressing room, one located on the ground floor with sea views and the other on the upper floor with access to the large terrace with views of La Concha, another exterior bedroom and separate bathroom. To enjoy the views from any point of the property, we have an equipped kitchen and a spacious living room with a dining area that gives us access to the extensive terrace. It has air conditioning.

Additional Info

For Sale	Beds: 3	Baths: 3
Type: Penthouse	Area: 139 sq m	Garden
Pool	Setting: Close To Town	Close To Schools
Urbanisation	Orientation: South West	Condition: Good
Pool: Communal	Climate Control: Air Conditioning	Views: Panoramic
Lift	Private Terrace	Garden: Communal
Parking: Garage	Built Area : 139 sq m	