

## 3 Bed Apartment For Sale

# €475,000

**Puerto Banús, Costa del Sol**

**Ref: R3943672**

Nice apartment located in the emblematic urbanization of Jardines del Puerto in the heart of Puerto Banús. The property consists of a living - dining room with direct access to the terrace overlooking the garden. Fully equipped kitchen and three bedrooms with two bathrooms. Also included in the price is a garage space in the underground parking lot. Large and well-kept gardens and community pools. An ideal investment to rent or to enjoy on vacation.

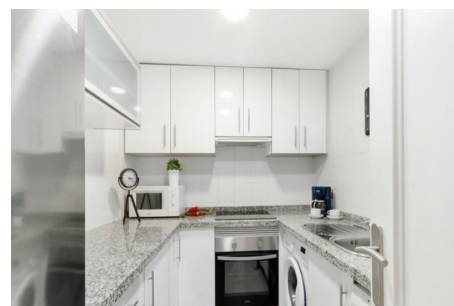
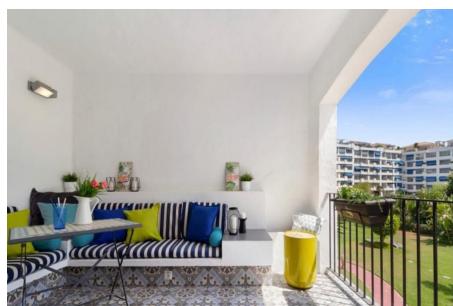
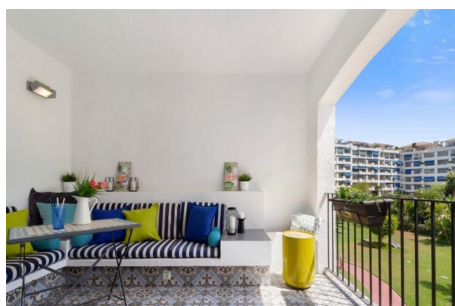
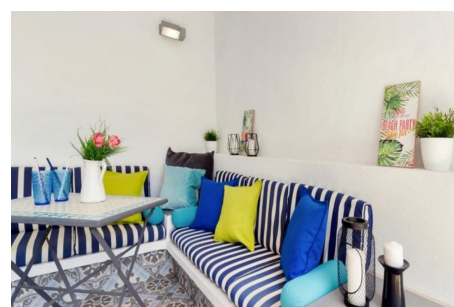
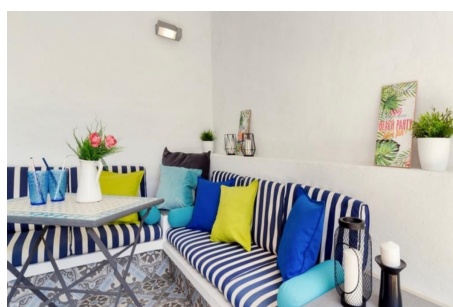
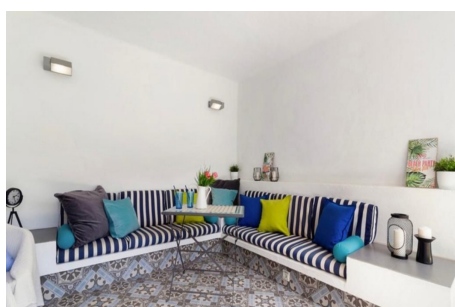
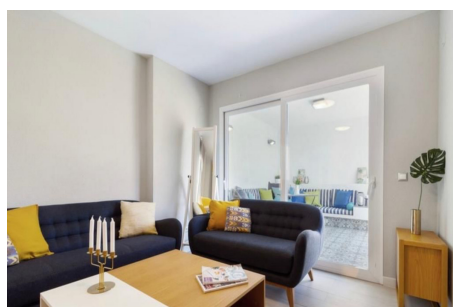
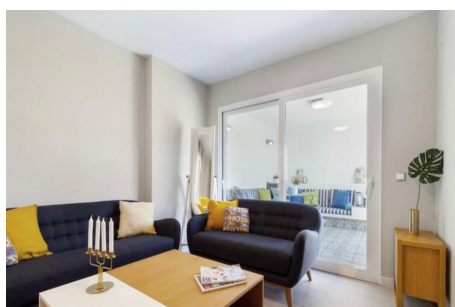
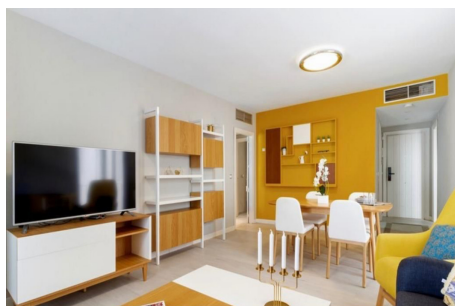
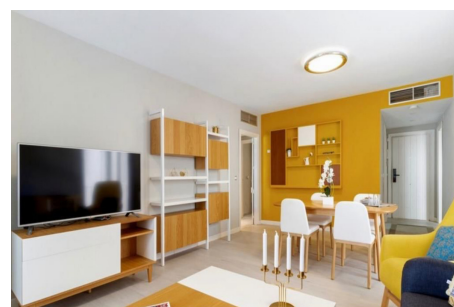
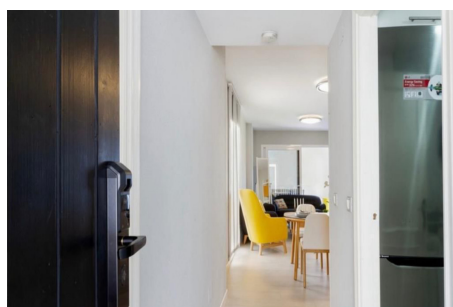
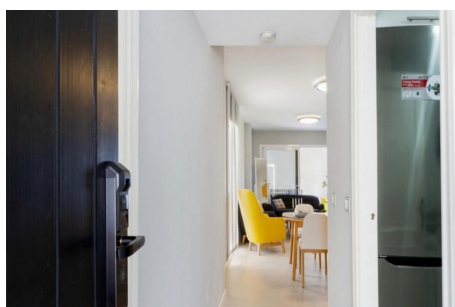
Telephone: +34 637 87 73 78

Email: [info@banusimmo.com](mailto:info@banusimmo.com)

La Reserva Del Alcuacuz, La Azalia 1 -1B, 29679, Benahavis

*BanusImmo*  
MARBELLA

# Gallery



Telephone: +34 637 87 73 78

Email: [info@banusimmo.com](mailto:info@banusimmo.com)

La Reserva Del Alcuarcz, La Azalia 1 -1B, 29679, Benahavis

*Banus Immo*  
MARBELLA

# Property Description

**Location:** Puerto Banús, Costa del Sol, Spain

Nice apartment located in the emblematic urbanization of Jardines del Puerto in the heart of Puerto Banús.

The property consists of a living - dining room with direct access to the terrace overlooking the garden.

Fully equipped kitchen and three bedrooms with two bathrooms.

Also included in the price is a garage space in the underground parking lot.

Large and well-kept gardens and community pools.

An ideal investment to rent or to enjoy on vacation.

# Additional Info

For Sale	Beds: 3	Baths: 2
Type: Apartment	Area: 135 sq m	Garden
Pool	Setting: Beachside	Close To Port
Close To Schools	Orientation: East	Condition: Excellent
Pool: Communal	Climate Control: Air Conditioning	Views: Garden
Pool	Covered Terrace	Lift
Fitted Wardrobes	Near Transport	Private Terrace
Marble Flooring	Furniture: Fully Furnished	Kitchen: Fully Fitted
Garden: Communal	Built Area : 135 sq m	