

3 Bed Apartment For Sale

€395,000

Estepona, Costa del Sol

Ref: R4033051

Middle Floor Apartment, Estepona, Costa del Sol. 3 Bedrooms, 2 Bathrooms, Built 110 m², Terrace 20 m². Setting : Beachfront, Town, Suburban, Beachside, Port, Village, Close To Port, Close To Shops, Close To Sea, Close To Town, Close To Schools, Marina, Close To Marina, Urbanisation, Front Line Beach Complex. Orientation : East, South East. Condition : Excellent. Pool : Communal. Climate Control : Air Conditioning, Pre Installed A/C, Hot A/C, Cold A/C. Views : Sea, Beach. Features : Covered Terrace, Lift, Fitted Wardrobes, Near Transport, Private Terrace, Satellite TV, ADSL / WIFI, Utility Room, Ensuite Bathroom, Near Church. Kitchen : Fully Fitted. Garden : Communal. Security : Gated Complex, Entry Phone. Category : Beachfront.

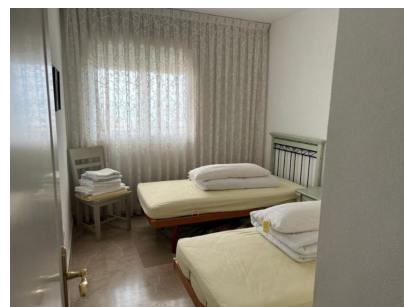
Telephone: +34 637 87 73 78

Email: info@banusimmo.com

La Reserva Del Alczucz, La Azalia 1 -1B, 29679, Benahavis

BanusImmo
MARBELLA

Gallery



Telephone: +34 637 87 73 78

Email: info@banusimmo.com

La Reserva Del Alcuzcuz, La Azalia 1 -1B, 29679, Benahavis

BanusImmo
MARBELLA

Property Description

Location: Estepona, Costa del Sol, Spain

Middle Floor Apartment, Estepona, Costa del Sol.

3 Bedrooms, 2 Bathrooms, Built 110 m², Terrace 20 m².

Setting : Beachfront, Town, Suburban, Beachside, Port, Village, Close To Port, Close To Shops, Close To Sea, Close To Town, Close To Schools, Marina, Close To Marina, Urbanisation, Front Line Beach Complex.

Orientation : East, South East.

Condition : Excellent.

Pool : Communal.

Climate Control : Air Conditioning, Pre Installed A/C, Hot A/C, Cold A/C.

Views : Sea, Beach.

Features : Covered Terrace, Lift, Fitted Wardrobes, Near Transport, Private Terrace, Satellite TV, ADSL / WIFI, Utility Room, Ensuite Bathroom, Near Church.

Kitchen : Fully Fitted.

Garden : Communal.

Security : Gated Complex, Entry Phone.

Category : Beachfront.

Additional Info

For Sale	Beds: 3	Baths: 2
Type: Apartment	Area: 130 sq m	Garden
Pool	Setting: Beachfront	Town
Beachside	Port	Village
Close To Port	Close To Shops	Close To Sea
Close To Town	Close To Schools	Marina
Close To Marina	Urbanisation	Front Line Beach Complex
Orientation: East	South East	Condition: Excellent
Pool: Communal	Climate Control: Air Conditioning	Pre Installed A/C
Hot A/C	Cold A/C	Views: Sea
Beach	Covered Terrace	Lift
Fitted Wardrobes	Near Transport	Private Terrace
Satellite TV	WiFi	Utility Room
Ensuite Bathroom	Near Church	Kitchen: Fully Fitted
Garden: Communal	Security: Gated Complex	Entry Phone

Category: Beachfront

Built Area : 130 sq m

Telephone: +34 637 87 73 78

Email: info@banusimmo.com

La Reserva Del Alcuarcz, La Azalia 1 -1B, 29679, Benahavis

Banus Immo[®]
MARBELLA