

6 Bed Apartment For Sale

€4,200,000

Puerto Banús, Costa del Sol

Ref: R2768600

This unique large beachfront garden duplex occupies the front line to the beach only steps away from a private gate onto the promenade in Puerto Banus. The unique property has been sub-divided into 4 separate apartments sharing a common private entry foyer to ideally suit a large extended family or group of friends buying together, or as a rental investment. Each of the apartments has its own title deed, allowing a buyer re-sell any of the properties. Options exit to re-combine the upper or lower 2 apartments, or the entire duplex. Located right on the beachfront in central Puerto Banus, there are two apartments on the ground floor with direct garden access, and two on the first floor with private terraces. All four apartments offer wonderful sea views right on the beachfront, and have the...

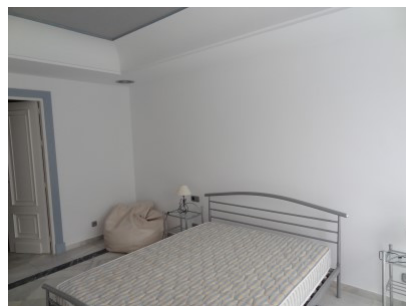
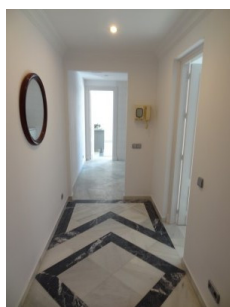
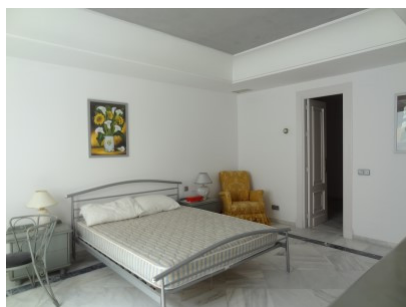
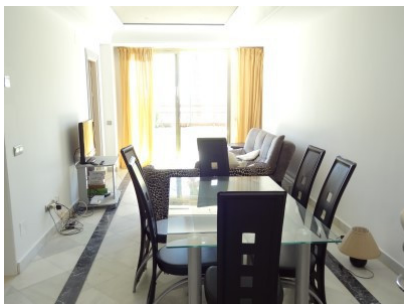
Telephone: +34 637 87 73 78

Email: info@banusimmo.com

La Reserva Del Alcuzcuz, La Azalia 1 -1B, 29679, Benahavis

BanusImmo
MARBELLA

Gallery



Telephone: +34 637 87 73 78

Email: info@banusimmo.com

La Reserva Del Alucuz, La Azalia 1 -1B, 29679, Benahavis

Banus Immo
MARBELLA

Property Description

Location: Puerto Banús, Costa del Sol, Spain

This unique large beachfront garden duplex occupies the front line to the beach only steps away from a private gate onto the promenade in Puerto Banus. The unique property has been sub-divided into 4 separate apartments sharing a common private entry foyer to ideally suit a large extended family or group of friends buying together, or as a rental investment. Each of the apartments has its own title deed, allowing a buyer re-sell any of the properties. Options exist to re-combine the upper or lower 2 apartments, or the entire duplex. Located right on the beachfront in central Puerto Banus, there are two apartments on the ground floor with direct garden access, and two on the first floor with private terraces. All four apartments offer wonderful sea views right on the beachfront, and have their own small kitchens and lounges. There are 2 x 2 bed apartments (145m² each) + 2 x 1 bed apartments (130 m² each) each with their own entrances. 3 underground parking spaces included. The complex also offers a large communal swimming pool and direct beach access. A unique set-up right on the beachfront in Puerto Banus.

Telephone: +34 637 87 73 78

Email: info@banusimmo.com

La Reserva Del Alcuarczuz, La Azalia 1 -1B, 29679, Benahavis

BanusImmo[®]
MARBELLA

Additional Info

For Sale	Beds: 6	Baths: 6
Type: Apartment	Area: 663 sq m	Garden
Pool	Setting: Beachfront	Town
Commercial Area	Beachside	Port
Close To Port	Close To Shops	Close To Sea
Close To Town	Close To Schools	Marina
Close To Marina	Front Line Beach Complex	Orientation: South
Condition: Excellent	Pool: Communal	Climate Control: Air Conditioning
Views: Sea	Beach	Panoramic
Lift	Fitted Wardrobes	Near Transport
Private Terrace	Satellite TV	WiFi
Guest Apartment	Storage Room	Utility Room
Ensuite Bathroom	Marble Flooring	Jacuzzi
Barbeque	Double Glazing	Near Mosque
Near Church	Kitchen: Fully Fitted	Garden: Communal

Security: Gated Complex

Electric Blinds

Entry Phone

Alarm System

Parking: Underground

More Than One

Category: Beachfront

Holiday Homes

Investment

Luxury

Reduced

Resale

Built Area : 663 sq m

Telephone: +34 637 87 73 78

Email: info@banusimmo.com

La Reserva Del Alcuarczuz, La Azalia 1 -1B, 29679, Benahavis

Banus Immo
MARBELLA