

## 6 Bed Villa (Detached) For Sale

**€2,595,000**

**Benahavís, Costa del Sol**

**Ref: R3729538**

OFF-PLAN ecological luxury contemporary villa in La Reserva de Sotogrande, Sotogrande Alto with open sea and golf views consisting out; The ground floor; entrance hall with wheelchair-friendly lift, guest toilet, technical installations room, spacious living/dining area with big open plan kitchen fully equipped with Bosch appliances and separate pantry, furthermore you find on this floor a separate bedroom/study with en-suite bathroom, big covered terraces who give out to the big heated pool of 72,00 m2. On the first floor: lift, landing, master bedroom with master bathroom and big dressing and of course a huge private terrace. A distributor leads you to another bedroom with 2 en-suite bathrooms and a terrace. In the semi-basement, you have a huge carport with stairs with a path that leads...

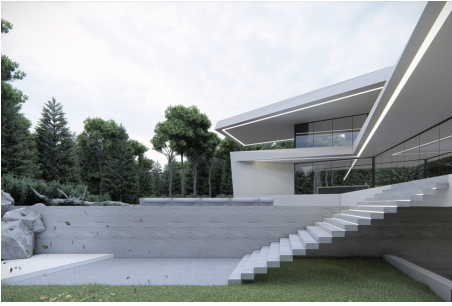
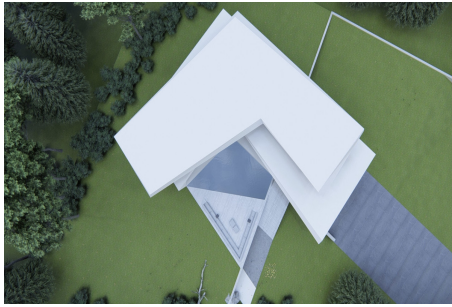
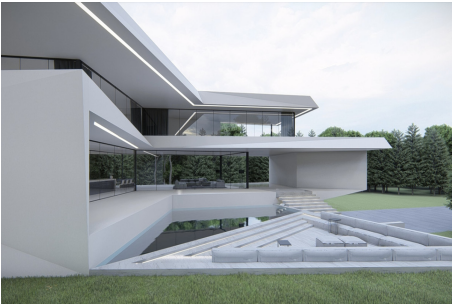
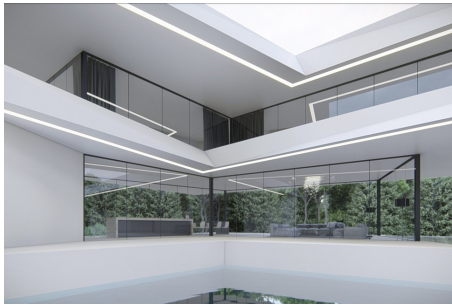
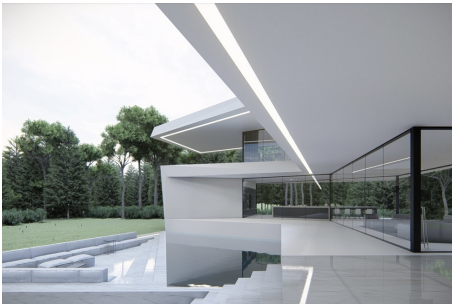
Telephone: +34 637 87 73 78

Email: [info@banusimmo.com](mailto:info@banusimmo.com)

La Reserva Del Alcuzcuz, La Azalia 1 -1B, 29679, Benahavis

*BanusImmo*  
MARBELLA

# Gallery



# Property Description

**Location:** Benahavís, Costa del Sol, Spain

OFF-PLAN ecological luxury contemporary villa in La Reserva de Sotogrande, Sotogrande Alto with open sea and golf views consisting out;

The ground floor; entrance hall with wheelchair-friendly lift, guest toilet, technical installations room, spacious living/dining area with big open plan kitchen fully equipped with Bosch appliances and separate pantry, furthermore you find on this floor a separate bedroom/study with en-suite bathroom, big covered terraces who give out to the big heated pool of 72,00 m<sup>2</sup>.

On the first floor: lift, landing, master bedroom with master bathroom and big dressing and of course a huge private terrace. A distributor leads you to another bedroom with 2 en-suite bathrooms and a terrace.

In the semi-basement, you have a huge carport with stairs with a path that leads to the front entrance. Also, the lift brings you to this floor where you find another bedroom with an en-suite bathroom, a self-contained apartment, and a games room.

Furthermore, there is a fully self-contained apartment that has a living/galley kitchen area with a bedroom, dressing, and en-suite bathroom. The self-contained apartment is accessible from the carport, but we could easily make access from the lift area also.

Construction time approx. 10 to 12 months after the licenses.

Warranties

10 years on the structure

5 years on the installations

2 years on the finishing

# Additional Info

For Sale	Beds: 6	Baths: 7
Type: Villa (Detached)	Area: 1267 sq m	Land Area: 7500 sq m
Garden	Setting: Frontline Golf	Close To Golf
Close To Town	Close To Schools	Urbanisation
Orientation: East	South East	South
South West	West	Condition: New Construction
Pool: Heated	Climate Control: Air Conditioning	Hot A/C
Cold A/C	Fireplace	U/F Heating
U/F/H Bathrooms	Views: Mountain	Country
Panoramic	Garden	Pool
Lake	Covered Terrace	Lift
Fitted Wardrobes	Private Terrace	Sauna
Games Room	Guest Apartment	Guest House
Storage Room	Utility Room	Ensuite Bathroom
Disabled Access	Double Glazing	Domotics

Restaurant On Site	Basement	Fiber Optic
Furniture: Optional	Kitchen: Fully Fitted	Garden: Private
Easy Maintenance	Security: Gated Complex	Electric Blinds
Entry Phone	Alarm System	24 Hour Security
Safe	Parking: Underground	Garage
Covered	Open	More Than One
Private	Utilities: Electricity	Drinkable Water
Telephone	Category: Golf	Investment
Luxury	Off Plan	Contemporary
Built Area : 1267 sq m	Land Size : 7500 sq m	

Telephone: +34 637 87 73 78

Email: [info@banusimmo.com](mailto:info@banusimmo.com)

La Reserva Del Alczucz, La Azalia 1 -1B, 29679, Benahavis