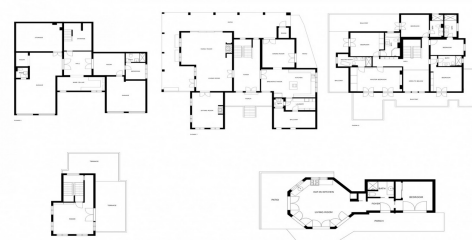


SIZES AND DIMENSIONS ARE APPROXIMATE. ACTUAL MAY VARY.



SIZES AND DIMENSIONS ARE APPROXIMATE. ACTUAL MAY VARY.

## 6 Bed Villa (Detached) For Sale

# €1,900,000

**Sotogrande, Costa del Sol**

**Ref: R3922894**

This charming property is situated in a quiet cul-de-sac in Sotogrande alto, near the Valderrama Golf Club and Sotogrande International School. Mature and very private gardens accommodate this large spacious family home. The sizeable grounds include a tennis court and fantastic separate guest accommodation. This property is ready to move in but equally just as suitable for a fabulous upgrade with extra square meters easily added to increase its value. The terraces that wrap around the house can easily be included to the internal build, dramatically changing the exterior façade of the property, and adding even more internal space to the property. (Not that its needed) The entrance hall features a stain glass window providing light to the tall space. To the right of the entrance hall is a mo...

Telephone: +34 637 87 73 78

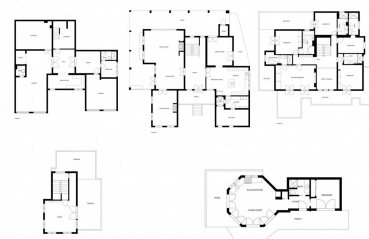
Email: [info@banusimmo.com](mailto:info@banusimmo.com)

La Reserva Del Alcuizcuz, La Azalia 1 -1B, 29679, Benahavis

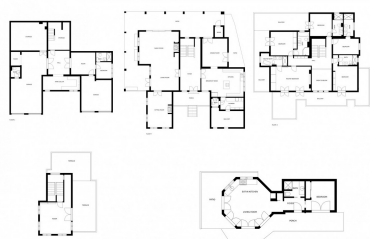
*BanusImmo*  
MARBELLA



# Gallery



SIZES AND DIMENSIONS ARE APPROXIMATE, ACTUAL MAY VARY



SIZES AND DIMENSIONS ARE APPROXIMATE, ACTUAL MAY VARY



Telephone: +34 637 87 73 78

Email: [info@banusimmo.com](mailto:info@banusimmo.com)

La Reserva Del Alcuizcuz, La Azalia 1 -1B, 29679, Benahavis

*Banus Immo*  
MARBELLA

# Property Description

**Location:** Sotogrande, Costa del Sol, Spain

This charming property is situated in a quiet cul-de-sac in Sotogrande alto, near the Valderrama Golf Club and Sotogrande International School. Mature and very private gardens accommodate this large spacious family home. The sizeable grounds include a tennis court and fantastic separate guest accommodation. This property is ready to move in but equally just as suitable for a fabulous upgrade with extra square meters easily added to increase its value. The terraces that wrap around the house can easily be included to the internal build, dramatically changing the exterior façade of the property, and adding even more internal space to the property. (Not that its needed) The entrance hall features a stain glass window providing light to the tall space. To the right of the entrance hall is a modern kitchen with family dining area. The kitchen leads to a dining room that opens onto the covered terrace. To the left of the entrance is a large reception room with fireplace and a snug/family room, both with access to the garden and pool. The upper floor comprises 5 en-suite bedrooms, all with access to an outdoor terrace and view to the mature garden. Above this floor is a tower with an office room and open terrace. The basement incorporates a double garage, large workshop, laundry room and staff quarters. The property further provides a tennis court and wonderful, separate guest house with bedroom, bathroom, and living room.

# Additional Info

For Sale	Beds: 6	Baths: 6.5
Type: Villa (Detached)	Area: 864 sq m	Land Area: 2929 sq m
Garden	Pool	Setting: Close To Golf
Close To Port	Close To Shops	Close To Sea
Close To Town	Close To Schools	Orientation: South
Condition: Good	Pool: Private	Climate Control: Air Conditioning
Central Heating	Fireplace	Views: Garden
Pool	Covered Terrace	Fitted Wardrobes
Near Transport	Tennis Court	Guest Apartment
Storage Room	Furniture: Optional	Garden: Private
Parking: Private	Built Area : 864 sq m	Land Size : 2929 sq m

Telephone: +34 637 87 73 78

Email: [info@banusimmo.com](mailto:info@banusimmo.com)

La Reserva Del Alcuzcuz, La Azalia 1 -1B, 29679, Benahavis