



5 Bed Plot For Sale

€1,200,000

Marbella, Costa del Sol

Ref: R2670191

Located within walking distance of less than 100 m. to the best beach in Marbella , Elviria with its fine sand dunes with kilometers of beach to walk and swim. For sale including Basic and Execution Project, Adaptation Project to Plan 86, Sanitation Project, Landscaping Project, Lighting Project, Renders, Selection of Italian Design Materials and Construction Comparatives, Guarantees, License submitted 2.07.2015 and fees paid. It is about: Villa with 5 bedrooms & 5 bathrooms on suite, designed for the enjoyment of whole family, with their varying ages and circumstances, accessibility can circulate a baby-trolley or a or a wheelchair wheelchair . Elevator in the three levels of Villa. A large infinity pool with waterfall of 16.5m. that ends in a beach with saline chlorination, seen fr...

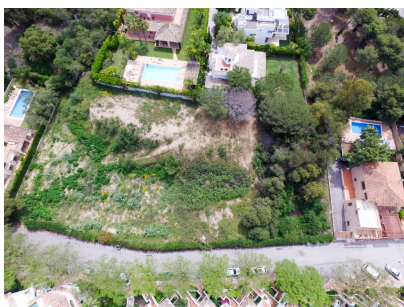
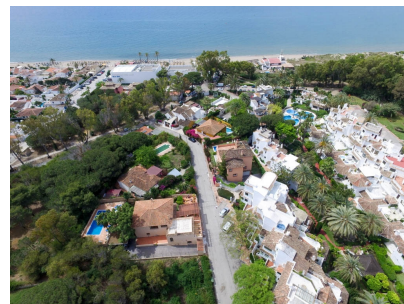
Telephone: +34 637 87 73 78

Email: info@banusimmo.com

La Reserva Del Alcuaz, La Azalia 1 -1B, 29679, Benahavis

BanusImmo
MARBELLA

Gallery



Telephone: +34 637 87 73 78

Email: info@banusimmo.com

La Reserva Del Alcuarcz, La Azalia 1 -1B, 29679, Benahavis

Banus Immo
MARBELLA

Property Description

Location: Marbella, Costa del Sol, Spain

Located within walking distance of less than 100 m. to the best beach in Marbella , Elviria with its fine sand dunes with kilometers of beach to walk and swim.

For sale including Basic and Execution Project, Adaptation Project to Plan 86, Sanitation Project, Landscaping Project, Lighting Project, Renders, Selection of Italian Design Materials and Construction Comparatives, Guarantees, License submitted 2.07.2015 and fees paid. It is about:

Villa with 5 bedrooms & 5 bathrooms on suite, designed for the enjoyment of whole family, with their varying ages and circumstances, accessibility can circulate a baby-trolley or a or a wheelchair wheelchair . Elevator in the three levels of Villa.

A large infinity pool with waterfall of 16.5m. that ends in a beach with saline chlorination, seen from almost every corner of the Villa, to give a feeling of freshness.

Landscaping of tropical gardens has been designed to create intimacy.

Private parking for guests.

The The selection of materials , are the latest in Italian design presented in the most important world fair in Bologna 2015.

There are more glass than wall in the main areas of the Villa, to allow a panoramic view and possible observe everything going on around you. If you're cooking, you are watching your kids in the pool. Since you walk through the door, you have a full perspective of space inside and out.

The main floor has a spacious living-dining room opening into a pergola porch where will be the summer lounge, kitchen with island, guest toilet, 1 bedroom with bathroom en -suite.

From the main floor through a spacious, modern cantilevered staircase leads to the upper floor where is the master bedroom with dressing room and en -suite bathroom and private terrace and two more bedrooms with bathrooms en -suite.

Ground floor : office -bar, gym, sauna - hammam , home -cinema, laundry, wardrobe and a fifth bedroom with and a fifth bedroom with en -suite . All rooms have natural light. have natural light. have natural light. have natural light. Garage for 2 cars and utility room.

The property is fully is fully equipped with Domotic system.

Underfloor heating and air conditioning by fan coil by integrated false ceiling ducts.

This villa has been designed to offer complete comfort to all its inhabitants.

Plot 880m2. Total built size 578,03m2. Living area 444,52m2 more terraces 133,51m2. Pool 86,28m2.

Telephone: +34 637 87 73 78

Email: info@banusimmo.com

La Reserva Del Alcuza, La Azalia 1 -1B, 29679, Benahavis

Banus Immo
MARBELLA

Additional Info

For Sale	Beds: 5	Baths: 6.5
Type: Plot	Area: 711 sq m	Land Area: 880 sq m
Garden	Pool	Setting: Close To Shops
Close To Sea	Condition: Excellent	Pool: Private
Climate Control: Air Conditioning	Hot A/C	Views: Sea
Mountain	Garden	Pool
Lift	Fitted Wardrobes	Private Terrace
WiFi	Ensuite Bathroom	Access for people with reduced mobility
Double Glazing	Furniture: Not Furnished	Kitchen: Fully Fitted
Garden: Private	Security: Entry Phone	Alarm System
Parking: Garage	More Than One	Built Area : 711 sq m
Land Size : 880 sq m		