

## 6 Bed Villa (Detached) For Sale

**€5,200,000**

**Guadalmina Baja, Costa del Sol**

**Ref: R3896287**

Villa with stunning modern design, attention to detail, high-quality materials and appliances. The property has been created by Francisco Martinez Galván, a very well-reputed architect. The design of this villa is unique because it borrows elements from many aesthetics. In it, you can see nods to contemporary, traditional, art deco and even futuristic design. Its look is defined by both curved and straight lines, neutral colours and minimalism forms; the eye-catching architectural elements add visual interest into the space. Whenever possible, the design lets in lots of natural light: windowed walls, panoramic glass doors, terrace glass balustrades seamlessly uniting interior and exterior. Set on a generous plot of 1.900 m<sup>2</sup>, magnificent house offers 870 m<sup>2</sup> of light-filled, luxuriously appo...

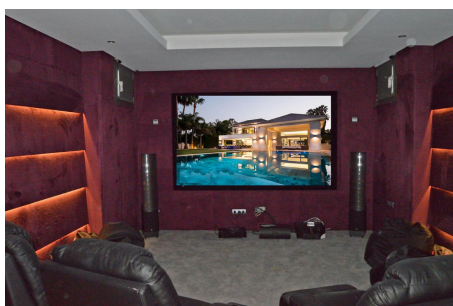
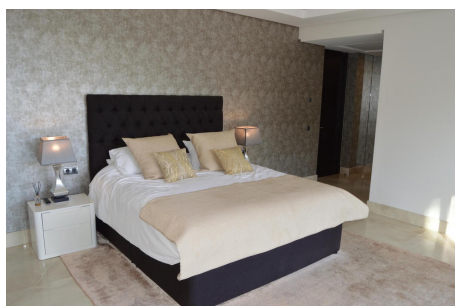
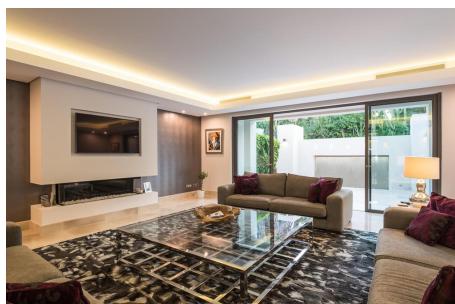
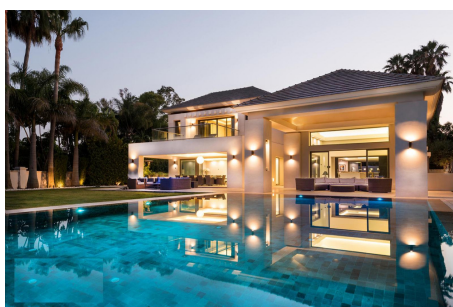
Telephone: +34 637 87 73 78

Email: [info@banusimmo.com](mailto:info@banusimmo.com)

La Reserva Del Alcuizcuz, La Azalia 1 -1B, 29679, Benahavis

*BanusImmo*  
MARBELLA

# Gallery



Telephone: +34 637 87 73 78

Email: [info@banusimmo.com](mailto:info@banusimmo.com)

La Reserva Del Alucuz, La Azalia 1 -1B, 29679, Benahavis

*Banus Immo*  
MARBELLA

# Property Description

**Location:** Guadalmina Baja, Costa del Sol, Spain

Villa with stunning modern design, attention to detail, high-quality materials and appliances. The property has been created by Francisco Martinez Galván, a very well-reputed architect. The design of this villa is unique because it borrows elements from many aesthetics. In it, you can see nods to contemporary, traditional, art deco and even futuristic design. Its look is defined by both curved and straight lines, neutral colours and minimalism forms; the eye-catching architectural elements add visual interest into the space. Whenever possible, the design lets in lots of natural light: windowed walls, panoramic glass doors, terrace glass balustrades seamlessly uniting interior and exterior. Set on a generous plot of 1.900 m<sup>2</sup>, magnificent house offers 870 m<sup>2</sup> of light-filled, luxuriously appointed, flexible living spaces. An expansive living room has lovely lounge areas with modern bio fireplace and full-width glass doors to terraces with underfloor heating. It is connected with an exceptional open plan fully fitted contemporary kitchen with top-range appliances, trendy island and breakfast bar counter that looks fantastic. Food, drinks and snacks can be served inside or outside, at al fresco dining or chill out areas, with guests gathering at the modern zero edge pool. The property features 6 serene bedrooms, 6 bathrooms and 2 toilets, storage, pantry, laundry, entertaining area with cinema room and gym, garage with 3 parking spaces. Unfurnished but ultimate in luxury, it comes with quality wood and marble elements and floors with underfloor heating throughout, tiles from Indonesia (pool), air conditioning, electric shutters, fitted wardrobes, etc.

Telephone: +34 637 87 73 78

Email: [info@banusimmo.com](mailto:info@banusimmo.com)

La Reserva Del Alcazucuz, La Azalia 1 -1B, 29679, Benahavis

*Banus Immo*  
MARBELLA

# Additional Info

For Sale	Beds: 6	Baths: 6.5
Type: Villa (Detached)	Area: 977 sq m	Land Area: 1900 sq m
Garden	Pool	Setting: Commercial Area
Beachside	Close To Golf	Close To Shops
Close To Sea	Close To Town	Close To Schools
Close To Forest	Urbanisation	Orientation: South East
Condition: Excellent	Pool: Private	Climate Control: Air Conditioning
Hot A/C	Cold A/C	Fireplace
U/F Heating	U/F/H Bathrooms	Views: Mountain
Garden	Pool	Courtyard
Forest	Covered Terrace	Fitted Wardrobes
Near Transport	Private Terrace	Solarium
Satellite TV	Gym	Storage Room
Utility Room	Ensuite Bathroom	Access for people with reduced mobility
Marble Flooring	Jacuzzi	Barbeque

Double Glazing	Domotics	Near Church
Fiber Optic	Furniture: Not Furnished	Kitchen: Fully Fitted
Garden: Private	Landscaped	Security: Gated Complex
Electric Blinds	Entry Phone	Alarm System
24 Hour Security	Safe	Parking: Garage
More Than One	Utilities: Electricity	Drinkable Water
Category: Bargain	Golf	Investment
Luxury	Resale	Contemporary
Built Area : 977 sq m	Land Size : 1900 sq m	

Telephone: +34 637 87 73 78

Email: [info@banusimmo.com](mailto:info@banusimmo.com)

La Reserva Del Alcuarczuz, La Azalia 1 -1B, 29679, Benahavis

*Banus Immo*  
MARBELLA