



4 Bed Townhouse For Sale

€590,000

San Pedro de Alcántara, Costa del Sol

Ref: R3796180

Magnificent townhouse with private garden in central area in San Pedro de Alcantara. On the first floor: we find a spacious living room with fireplace, also large and fully equipped kitchen, plus a guest toilet. There is access from the living room or kitchen to its large private garden with terrace and porch, ideal for outdoor dining and enjoy the good weather. On the second floor there are 4 spacious bedrooms and 2 bathrooms. Very bright due to its south-west orientation. On the top floor, a large sun terrace, glazed part of it with curtain glass or Lumon and with fantastic sea views. Private parking for 1 car and 1 motorcycle and communal space. Communal swimming pool.

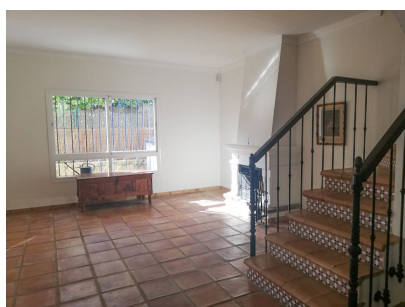
Telephone: +34 637 87 73 78

Email: info@banusimmo.com

La Reserva Del Alcuzcuz, La Azalia 1 -1B, 29679, Benahavis

Banus Immo
MARBELLA

Gallery



Telephone: +34 637 87 73 78

Email: info@banusimmo.com

La Reserva Del Alcuizcuz, La Azalia 1 -1B, 29679, Benahavis

Banus Immo
MARBELLA

Property Description

Location: San Pedro de Alcántara, Costa del Sol, Spain

Magnificent townhouse with private garden in central area in San Pedro de Alcantara.

On the first floor: we find a spacious living room with fireplace, also large and fully equipped kitchen, plus a guest toilet. There is access from the living room or kitchen to its large private garden with terrace and porch, ideal for outdoor dining and enjoy the good weather.

On the second floor there are 4 spacious bedrooms and 2 bathrooms. Very bright due to its south-west orientation.

On the top floor, a large sun terrace, glazed part of it with curtain glass or Lumon and with fantastic sea views.

Private parking for 1 car and 1 motorcycle and communal space.

Communal swimming pool.

Additional Info

For Sale	Beds: 4	Baths: 4
Type: Townhouse	Area: 220 sq m	Land Area: 400 sq m
Pool	Setting: Town	Suburban
Commercial Area	Close To Golf	Close To Port
Close To Sea	Close To Town	Close To Schools
Close To Marina	Orientation: South	South West
West	Pool: Communal	Climate Control: Air Conditioning
Hot A/C	Views: Sea	Mountain
Panoramic	Covered Terrace	Private Terrace
Solarium	Storage Room	Ensuite Bathroom
Jacuzzi	Double Glazing	Security: Gated Complex
Parking: Garage	Covered	More Than One
Communal	Private	Built Area : 220 sq m
Land Size : 400 sq m		

Telephone: +34 637 87 73 78

Email: info@banusimmo.com

La Reserva Del Alcuzczuz, La Azalia 1 -1B, 29679, Benahavis

BanusImmo
MARBELLA