

3 Bed Apartment For Sale

€750,000

Benahavís, Costa del Sol

Ref: R2305238

Brand new magnificent apartment, furnished with designer furniture, located in Los Flamingos, with pool and 24 hour security. The apartment is located 3 minutes from Villa Padierna Palace Hotel, located in an area that inspires serenity, beauty and tranquility. It has a usable area of 115 m². Large open living room, and dining room, three bedrooms, kitchen, laundry area, 3 large bedroom and three bathrooms. It has a covered terrace of 17 m² with a second impressive terrace of 147 m² with magnificent mountain views, as well as the sea and the pool.

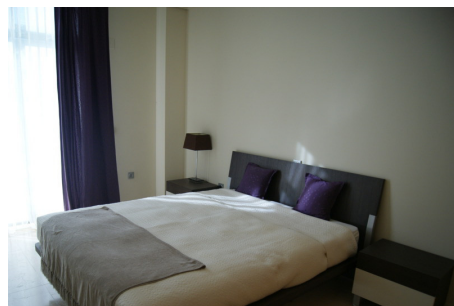
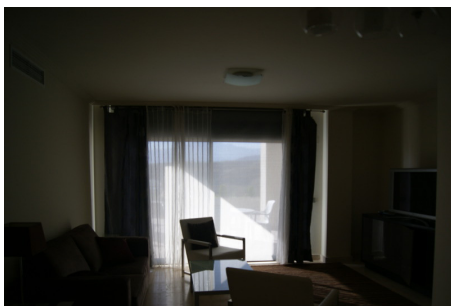
Telephone: +34 637 87 73 78

Email: info@banusimmo.com

La Reserva Del Alczucuz, La Azalia 1 -1B, 29679, Benahavis

Banus Immo
MARBELLA

Gallery



Telephone: +34 637 87 73 78

Email: info@banusimmo.com

La Reserva Del Alcuizcuz, La Azalia 1 -1B, 29679, Benahavis

Banus Immo
MARBELLA

Property Description

Location: Benahavís, Costa del Sol, Spain

Brand new magnificent apartment, furnished with designer furniture, located in Los Flamingos, with pool and 24 hour security. The apartment is located 3 minutes from Villa Padierna Palace Hotel, located in an area that inspires serenity, beauty and tranquility. It has a usable area of 115 m². Large open living room, and dining room, three bedrooms, kitchen, laundry area, 3 large bedrooms and three bathrooms. It has a covered terrace of 17 m² with a second impressive terrace of 147 m² with magnificent mountain views, as well as the sea and the pool.

Telephone: +34 637 87 73 78

Email: info@banusimmo.com

La Reserva Del Alcuazcuz, La Azalia 1 -1B, 29679, Benahavis

Banus Immo[®]
MARBELLA

Additional Info

For Sale	Beds: 3	Baths: 3
Type: Apartment	Area: 293 sq m	Garden
Pool	Orientation: West	Condition: Excellent
Pool: Communal	Climate Control: Air Conditioning	Views: Sea
Mountain	Golf	Garden
Pool	Covered Terrace	Lift
Fitted Wardrobes	Private Terrace	Tennis Court
Storage Room	Utility Room	Furniture: Fully Furnished
Kitchen: Fully Fitted	Garden: Communal	Parking: Private
Built Area : 293 sq m		