



## 2 Bed Penthouse For Sale

**€498,000**

**Benahavís, Costa del Sol**

**Ref: R3736468**

Completely renovated apartment in the middle of the village of Benahavis. This former restaurant has been perfectly renovated while retaining the typical Spanish construction materials. The apartment consists of 2 levels and a spacious terrace. The living room is spacious with lots of light and a modern kitchen with cooking island. It has 3 patio doors to the spacious terrace. The bedrooms are spacious, with a beautiful bathroom in between. This apartment is in an excellent location in the village, as on your doorstep what Benahavis can offer. Benahavis is a mountain village 7 km inland from the coast and Marbella. Malaga airport at 80 km. Gibraltar airport at 70 km.

Telephone: +34 637 87 73 78

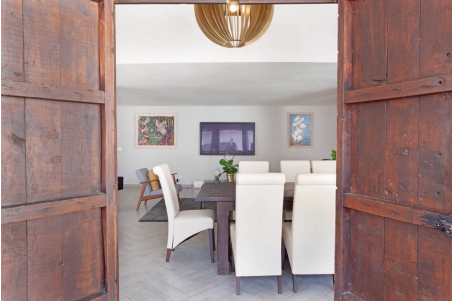
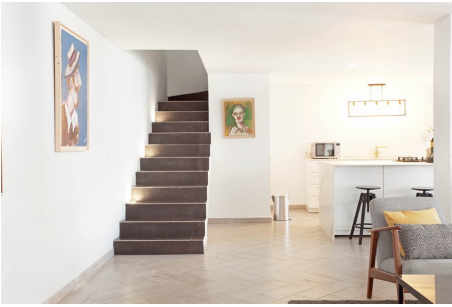
Email: [info@banusimmo.com](mailto:info@banusimmo.com)

La Reserva Del Alczuz, La Azalia 1 -1B, 29679, Benahavis

*Banus Immo*  
MARBELLA



# Gallery



Telephone: +34 637 87 73 78

Email: [info@banusimmo.com](mailto:info@banusimmo.com)

La Reserva Del Alcuarcz, La Azalia 1 -1B, 29679, Benahavis

# Property Description

**Location:** Benahavís, Costa del Sol, Spain

Completely renovated apartment in the middle of the village of Benahavis. This former restaurant has been perfectly renovated while retaining the typical Spanish construction materials. The apartment consists of 2 levels and a spacious terrace.

The living room is spacious with lots of light and a modern kitchen with cooking island. It has 3 patio doors to the spacious terrace. The bedrooms are spacious, with a beautiful bathroom in between.

This apartment is in an excellent location in the village, as on your doorstep what Benahavis can offer. Benahavis is a mountain village 7 km inland from the coast and Marbella. Malaga airport at 80 km. Gibraltar airport at 70 km.

# Additional Info

For Sale	Beds: 2	Baths: 1.5
Type: Penthouse	Area: 245 sq m	Pool
Setting: Town	Village	Mountain Pueblo
Close To Golf	Close To Shops	Close To Schools
Close To Forest	Urbanisation	Orientation: South
Condition: Excellent	Pool: Communal	Climate Control: Air Conditioning
Hot A/C	Cold A/C	Views: Courtyard
Covered Terrace	Fitted Wardrobes	Near Transport
Private Terrace	WiFi	Ensuite Bathroom
Fiber Optic	Furniture: Optional	Kitchen: Fully Fitted
Utilities: Electricity	Drinkable Water	Category: Holiday Homes
Luxury	Built Area : 245 sq m	

Telephone: +34 637 87 73 78

Email: [info@banusimmo.com](mailto:info@banusimmo.com)

La Reserva Del Alcuzcuz, La Azalia 1 -1B, 29679, Benahavis

*Banus Immo*  
MARBELLA