



4 Bed Townhouse To Rent

€3,200/mth.

Guadalmina Baja, Costa del Sol

Ref: R3649268

Nice townhouse located in the well known development of Guadalmina beach area, nearby all kind of amenities as commercial center, international school and golf course and just 5 minutes driving to Puerto Banus. Gated complex with manicured communal gardens, padel courts and communal pool. Built on 3 levels comprises on the main level; living area leading into a nice size corner garden facing west, fitted kitchen, one double bedroom and one bathroom. .On the upper level is the master bedroom en-suite with dressing area and 2 guest bedrooms en-suite. Basement with laundry area and storage , 2 garage with direct access to the property. COULD BE RENTED OUT UNFURNISHED OR FURNISHED AVAILABLE FROM 20TH SEPTEMBER LONG TERM

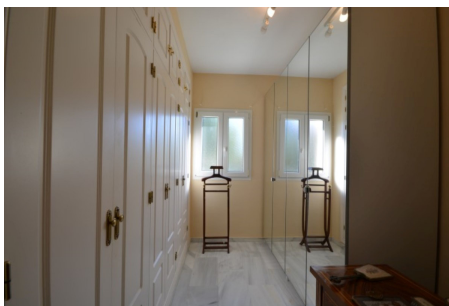
Telephone: +34 637 87 73 78

Email: info@banusimmo.com

La Reserva Del Alcuzcuz, La Azalia 1 -1B, 29679, Benahavis

BanusImmo
MARBELLA

Gallery



Telephone: +34 637 87 73 78

Email: info@banusimmo.com

La Reserva Del Alcuizcuz, La Azalia 1 -1B, 29679, Benahavis

BanusImmo
MARBELLA

Property Description

Location: Guadalmina Baja, Costa del Sol, Spain

Nice townhouse located in the well known development of Guadalmina beach area, nearby all kind of amenities as commercial center, international school and golf course and just 5 minutes driving to Puerto Banus.

Gated complex with manicured communal gardens, padel courts and communal pool.

Built on 3 levels comprises on the main level; living area leading into a nice size corner garden facing west, fitted kitchen, one double bedroom and one bathroom.

.On the upper level is the master bedroom en-suite with dressing area and 2 guest bedrooms en-suite.

Basement with laundry area and storage , 2 garage with direct access to the property.

COULD BE RENTED OUT UNFURNISHED OR FURNISHED

AVAILABLE FROM 20TH SEPTEMBER LONG TERM

Additional Info

For Rent	Beds: 4	Baths: 4
Type: Townhouse	Area: 320 sq m	Land Area: 110 sq m
Garden	Pool	Setting: Beachside
Close To Shops	Close To Schools	Urbanisation
Orientation: West	Condition: Good	Pool: Communal
Climate Control: Hot A/C	Cold A/C	Views: Garden
Fitted Wardrobes	Private Terrace	Paddle Tennis
Storage Room	Ensuite Bathroom	Marble Flooring
Double Glazing	Basement	Furniture: Not Furnished
Optional	Kitchen: Fully Fitted	Garden: Communal
Security: Gated Complex	Entry Phone	Parking: Garage
Covered	More Than One	Built Area : 320 sq m
Land Size : 110 sq m		

Telephone: +34 637 87 73 78

Email: info@banusimmo.com

La Reserva Del Alcuzcuz, La Azalia 1 -1B, 29679, Benahavis