



3 Bed Penthouse For Sale

€875,000

Guadalmina Baja, Costa del Sol

Ref: R3649541

"Luxurious apartment in prestigious urbanization of Guadalmina Baja, with luxury qualities. It consists of an entrance hall; spacious living room with fireplace; 3 large bedrooms, 3 bathrooms; fully equipped kitchen with first class appliances; large terrace facing southeast with dining area. Apartment completely renovated and decorated. It is a gated complex with a huge common area with lake-type pool and children's play area. The price includes two garage parking spaces.. The penthouse is located in a highly demanded residential area located next to all kinds of necessary services, within walking distance of the beach and a short distance from Puerto Banus and Marbella. " Magnificent."

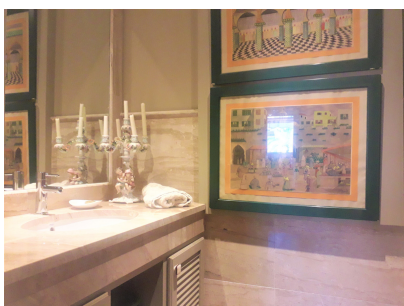
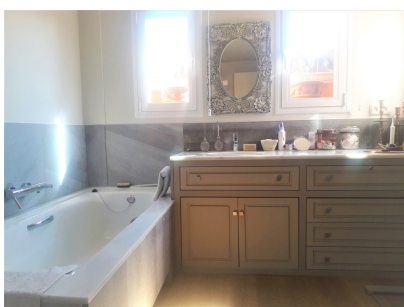
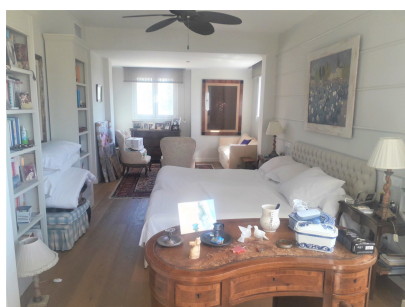
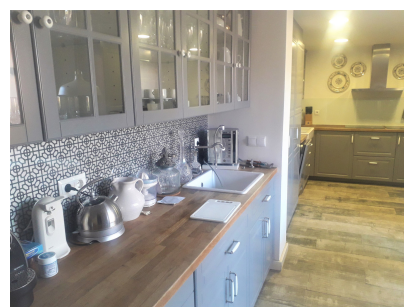
Telephone: +34 637 87 73 78

Email: info@banusimmo.com

La Reserva Del Alcuizcuz, La Azalia 1 -1B, 29679, Benahavis

Banus Immo
MARBELLA

Gallery



Telephone: +34 637 87 73 78

Email: info@banusimmo.com

La Reserva Del Aluzcuz, La Azalia 1 -1B, 29679, Benahavis

BanusImmo
MARBELLA

Property Description

Location: Guadalmina Baja, Costa del Sol, Spain

"Luxurious apartment in prestigious urbanization of Guadalmina Baja, with luxury qualities.

It consists of an entrance hall; spacious living room with fireplace; 3 large bedrooms, 3 bathrooms; fully equipped kitchen with first class appliances; large terrace facing southeast with dining area.

Apartment completely renovated and decorated. It is a gated complex with a huge common area with lake-type pool and children's play area.

The price includes two garage parking spaces..

The penthouse is located in a highly demanded residential area located next to all kinds of necessary services, within walking distance of the beach and a short distance from Puerto Banus and Marbella. "Magnificent."

Additional Info

For Sale	Beds: 3	Baths: 3
Type: Penthouse	Area: 289 sq m	Garden
Pool	Setting: Beachside	Close To Golf
Close To Port	Close To Shops	Close To Sea
Close To Town	Close To Schools	Urbanisation
Orientation: South	South West	Condition: Excellent
Pool: Communal	Climate Control: Air Conditioning	Fireplace
Views: Port	Garden	Covered Terrace
Lift	Fitted Wardrobes	Near Transport
Private Terrace	Ensuite Bathroom	Marble Flooring
Barbeque	Double Glazing	Near Church
Furniture: Fully Furnished	Part Furnished	Optional
Kitchen: Fully Fitted	Garden: Communal	Security: 24 Hour Security
Parking: Underground	More Than One	Utilities: Electricity

Telephone: +34 637 87 73 78

Email: info@banusimmo.com

La Reserva Del Alucuzcuz, La Azalia 1 -1B, 29679, Benahavis

Banus Immo
MARBELLA