



7 Bed Villa (Detached) For Sale

€4,400,000

Nueva Andalucía, Costa del Sol

Ref: R3532768

Contemporary modern villa is located in the Heart of Nueva Andalucia, only minutes away from Puerto Banus and Marbella. The property boasts an exceptional use of light and space to capture panoramic views to the Mediterranean Sea, La Concha Mountain trail and Golf Valley. The house offers 7 bedrooms and 7 bathrooms. A large living area and 2 kitchens. A large jacuzzi on the top terrace allows to benefit from the panoramic views day and night in the epitome of luxury. As well as a gym, cinema room and games room with snooker table. Outside there is a fully-fitted modern bar with wine cooler and BBQ grilling area. And you can relax with your guests in the heated infinity pool enjoying full privacy.

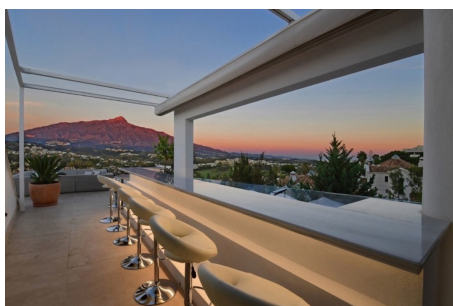
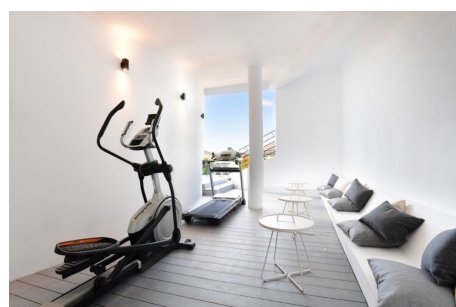
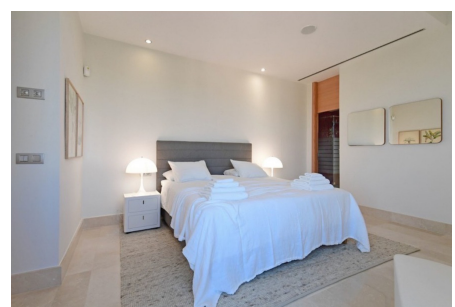
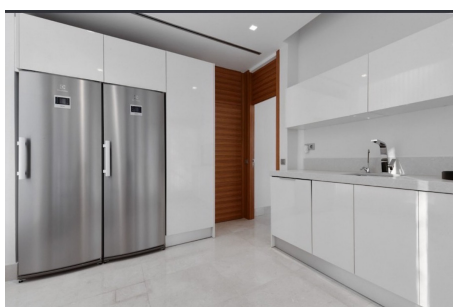
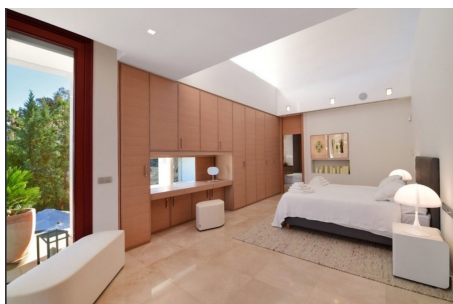
Telephone: +34 637 87 73 78

Email: info@banusimmo.com

La Reserva Del Alczucuz, La Azalia 1 -1B, 29679, Benahavis

Banus Immo
MARBELLA

Gallery



Telephone: +34 637 87 73 78

Email: info@banusimmo.com

La Reserva Del Alcuarcz, La Azalia 1 -1B, 29679, Benahavis

Banus Immo
MARBELLA

Property Description

Location: Nueva Andalucía, Costa del Sol, Spain

Contemporary modern villa is located in the Heart of Nueva Andalucía, only minutes away from Puerto Banus and Marbella.

The property boasts an exceptional use of light and space to capture panoramic views to the Mediterranean Sea, La Concha Mountain trail and Golf Valley.

The house offers 7 bedrooms and 7 bathrooms. A large living area and 2 kitchens.

A large jacuzzi on the top terrace allows to benefit from the panoramic views day and night in the epitome of luxury. As well as a gym, cinema room and games room with snooker table.

Outside there is a fully-fitted modern bar with wine cooler and BBQ grilling area. And you can relax with your guests in the heated infinity pool enjoying full privacy.

Additional Info

For Sale	Beds: 7	Baths: 7
Type: Villa (Detached)	Area: 610 sq m	Land Area: 1100 sq m
Garden	Pool	Setting: Close To Golf
Close To Port	Close To Shops	Close To Sea
Close To Town	Close To Schools	Urbanisation
Orientation: South East	Condition: Excellent	Recently Renovated
Pool: Private	Climate Control: Air Conditioning	Hot A/C
Cold A/C	Fireplace	U/F Heating
Views: Sea	Mountain	Panoramic
Garden	Pool	Covered Terrace
Fitted Wardrobes	Private Terrace	Satellite TV
WiFi	Ensuite Bathroom	Marble Flooring
Jacuzzi	Double Glazing	Kitchen: Fully Fitted
Garden: Private	Security: Entry Phone	Alarm System
24 Hour Security	Safe	Parking: Underground

Garage

More Than One

Utilities: Electricity

Drinkable Water

Telephone

Category: Luxury

Resale

Built Area : 610 sq m

Land Size : 1100 sq m

Telephone: +34 637 87 73 78

Email: info@banusimmo.com

La Reserva Del Alczucz, La Azalia 1 -1B, 29679, Benahavis

BanusImmo[®]
MARBELLA