



2 Bed Penthouse For Sale

€680,000

Estepona, Costa del Sol

Ref: R3454105

Impressive duplex penthouse of 160 m2 in front of the beach with magnificent views of the sea and the port of Estepona. It is located in a secure and well-maintained urbanization with beautiful gardens, parks, two swimming pools and parking. The urbanization has maximum security with a guard that controls who accesses it. There is air conditioning, heating and elevator. The price is worth it. You will not find an equal apartment in the whole building. Penthouse, Estepona, Costa del Sol. 2 Bedrooms, 2 Bathrooms, Built 186 m². Setting : Beachfront, Town, Beachside, Port, Close To Shops, Close To Sea, Close To Town, Close To Schools, Marina, Close To Marina, Front Line Beach Complex. Orientation : South, South West. Condition : Excellent. Pool : Communal. Climate Control : Air Conditioning,...

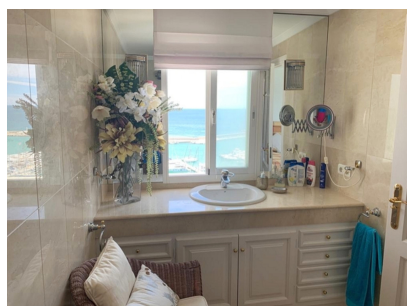
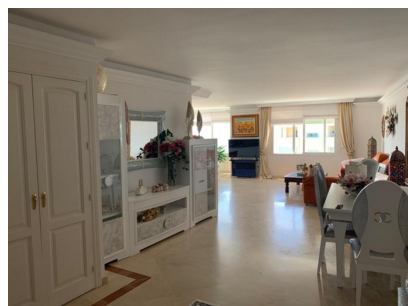
Telephone: +34 637 87 73 78

Email: info@banusimmo.com

La Reserva Del Alczucuz, La Azalia 1 -1B, 29679, Benahavis

BanusImmo
MARBELLA

Gallery



Telephone: +34 637 87 73 78

Email: info@banusimmo.com

La Reserva Del Alcuizcuz, La Azalia 1 -1B, 29679, Benahavis

Banus Immo
MARBELLA

Property Description

Location: Estepona, Costa del Sol, Spain

Impressive duplex penthouse of 160 m² in front of the beach with magnificent views of the sea and the port of Estepona. It is located in a secure and well-maintained urbanization with beautiful gardens, parks, two swimming pools and parking. The urbanization has maximum security with a guard that controls who accesses it. There is air conditioning, heating and elevator. The price is worth it. You will not find an equal apartment in the whole building.

Penthouse, Estepona, Costa del Sol.

2 Bedrooms, 2 Bathrooms, Built 186 m².

Setting : Beachfront, Town, Beachside, Port, Close To Shops, Close To Sea, Close To Town, Close To Schools, Marina, Close To Marina, Front Line Beach Complex.

Orientation : South, South West.

Condition : Excellent.

Pool : Communal.

Climate Control : Air Conditioning, Central Heating.

Views : Sea, Port, Panoramic.

Features : Lift, Fitted Wardrobes, Near Transport, Private Terrace, Storage Room, Marble Flooring, Double Glazing.

Kitchen : Fully Fitted.

Garden : Communal.

Security : Gated Complex.

Parking : Garage.

Utilities : Electricity, Drinkable Water.

Category : Beachfront, Holiday Homes, Investment.

Additional Info

For Sale	Beds: 2	Baths: 2
Type: Penthouse	Area: 186 sq m	Garden
Pool	Setting: Beachfront	Town
Beachside	Port	Close To Shops
Close To Sea	Close To Town	Close To Schools
Marina	Close To Marina	Front Line Beach Complex
Orientation: South	South West	Condition: Excellent
Pool: Communal	Climate Control: Air Conditioning	Central Heating
Views: Sea	Port	Panoramic
Lift	Fitted Wardrobes	Near Transport
Private Terrace	Storage Room	Marble Flooring
Double Glazing	Kitchen: Fully Fitted	Garden: Communal
Security: Gated Complex	Parking: Garage	Utilities: Electricity
Drinkable Water	Category: Beachfront	Holiday Homes

Telephone: +34 637 87 73 78

Email: info@banusimmo.com

La Reserva Del Alcuzczuz, La Azalia 1 -1B, 29679, Benahavis

Banus Immo
MARBELLA